

CAMBODIA MALARIA BULLETIN

DECEMBER 2013 BULLETIN, DATA TO 4TH QUARTER, CNM, CAMBODIA

Estimated coverage with LLIN or retreated mosquito net	Target ¹	Mobile ²
No. of persons at risk of malaria	3,342,007	448,593
No. of LLIN distributed YTD	2,244	4,568
No. of LLIN distributed YTD	1,607	467
No. of conventional nets distributed and retreated YTD	35,137	300
No. of long lasting nets distributed in last 3 years	2,954,224	5,035
Estimated coverage with LLIN / treated net (1 net / 1 pers)	89%	1%

¹ Pop of target villages

² Mobile pop (est from census)

Indicators	HIS			VMW			Total		
	2012	2013	Change	2012	2013	Change	2012	2013	Change
Malaria cases	45,553	24,135	-47%	28,613	20,068	-29%	74,166	44,203	-40%
Malaria Incidence ³	3.10	1.60	-48%	24.31	14.40	-41%	5.04	2.94	-42%
Malaria deaths	46	12	-74%	0	0	0%	46	12	-74%
Mortality rate ⁴	0.31	0.08	-75%	0.00	0.00	0%	0.31	0.08	-75%

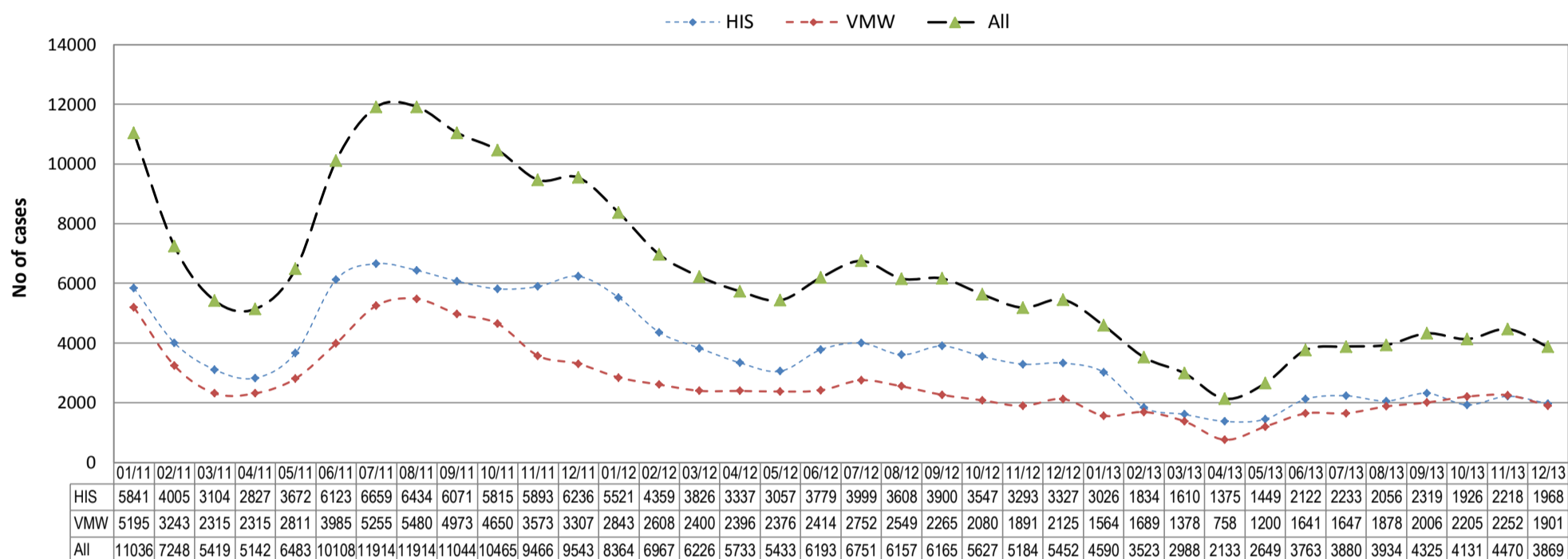
³ Cases per 1000 pop

⁴ Deaths per 100,000 pop

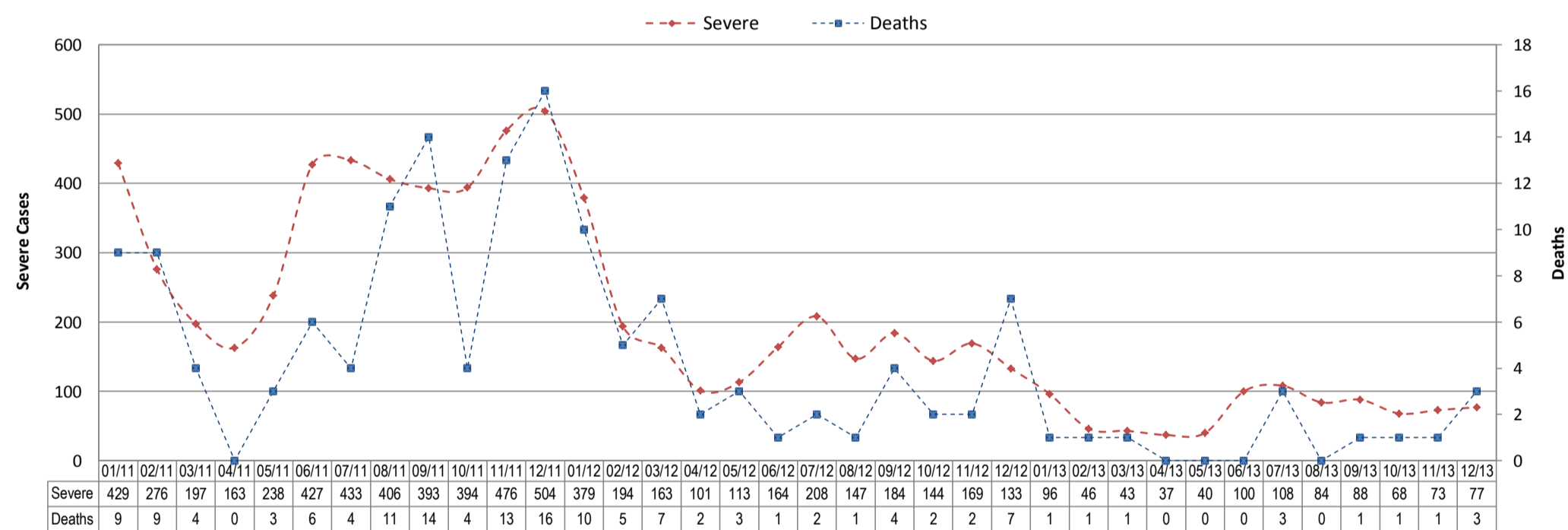
^{4,5} VMW rates uses VMW village populations

TRENDS IN SURVEILLANCE

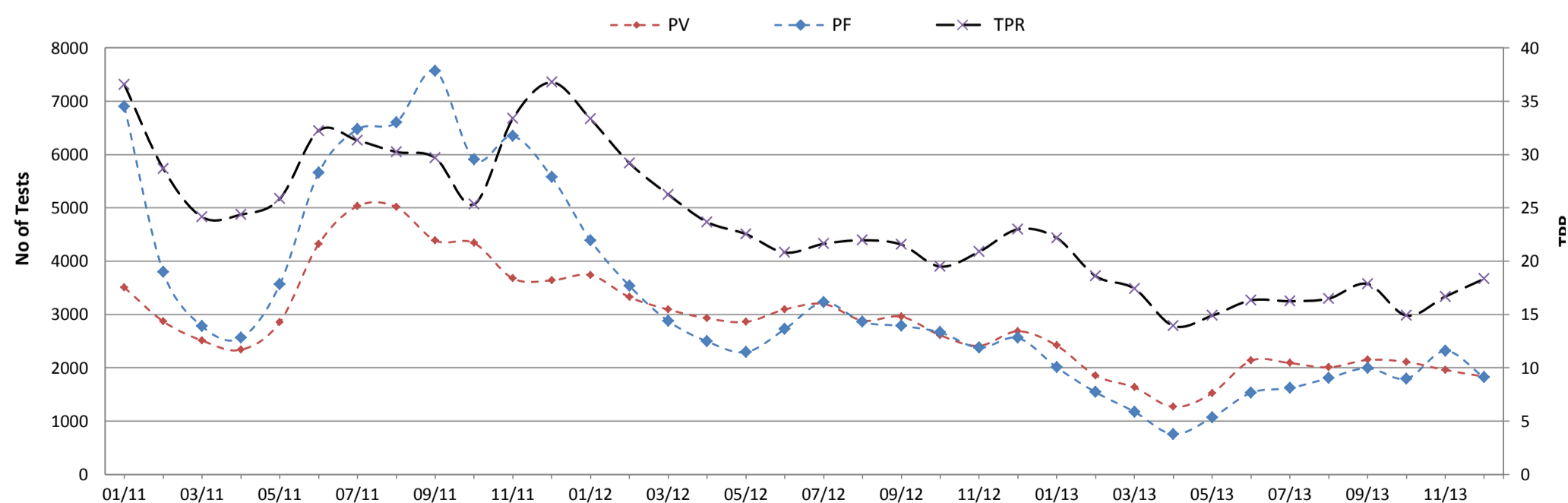
Treated malaria cases from HIS and VMW by month



Severe malaria cases and deaths from HIS by month



Malaria test results (VMW and HIS) by species⁶

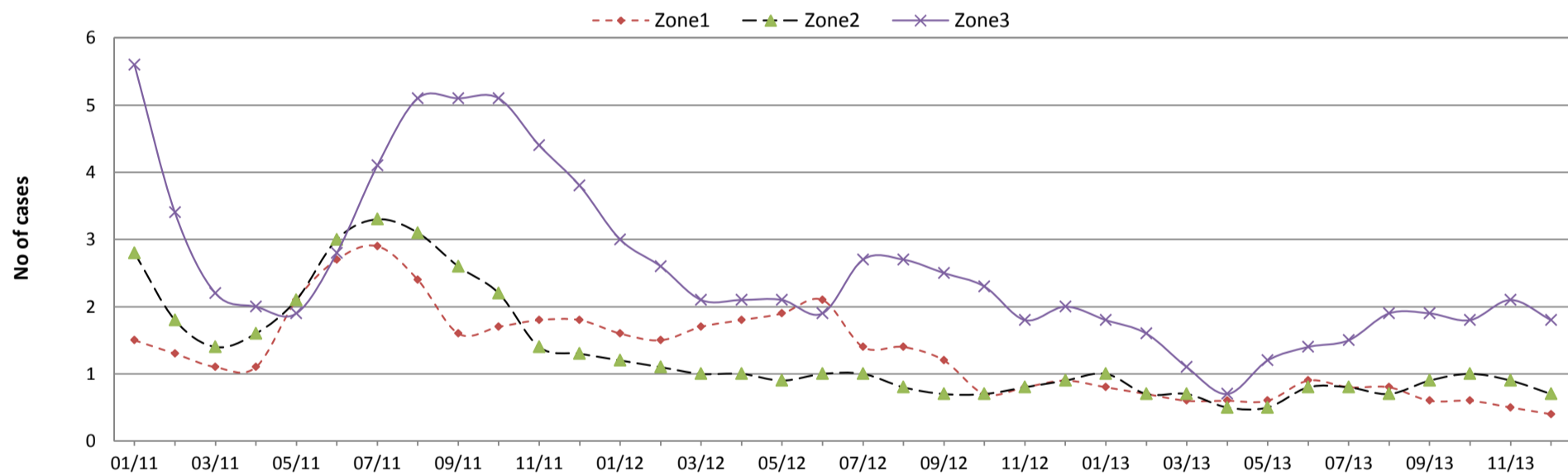


CONTAINMENT INDICATORS

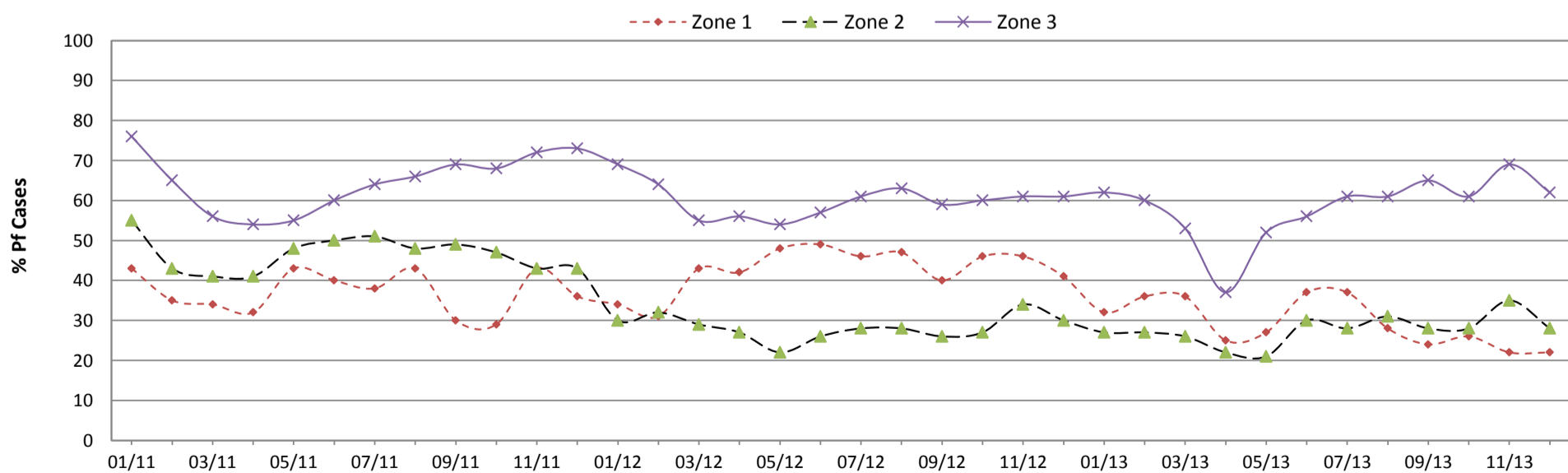
Estimated coverage (possession) with LLIN or retreated mosquito net					VMW RDT tests						
Indicators	Zone 1	Zone 2	Zone 3	Total	Zone	TPR			%Pf		
						2012	2013	Change	2012	2013	Change
No. of persons at risk of malaria (pop of target villages)	381,083	1,355,954	1,587,670	3,342,007	Zone 1	32%	23%	-30%	43%	30%	-30%
No. of LLIN distributed YTD	80	222	1,942	2,244	Zone 2	21%	17%	-18%	28%	28%	0%
No. of LLIHN distributed YTD	0	0	1,607	1,607	Zone 3	32%	24%	-23%	61%	61%	0%
No. of conventional nets distributed and retreated YTD	14,302	15,399	4,891	34,592							
No. of long lasting nets distributed in previous 3 years	259,370	1,123,034	1,556,018	2,938,422							
Estimated coverage with LLIN / treated net (1 net / 1 pers)	72%	84%	98%	89%							

National Surveillance data for the period Jan - Dec												
Indicators	HIS treated cases			VMW treated cases			Total treated cases			Incidence (per 1000 pop)		
	2012	2013	Change	2012	2013	Change	2012	2013	Change	2012	2013	Change
Z1 Total malaria cases	3,062	1,509	-51%	4,501	2,829	-37%	7,563	4,338	-43%	19.85	11.38	-43%
Z1 Severe malaria cases	229	79	-66%				229	79	-66%	0.60	0.21	-66%
Z1 Malaria deaths	1	0	-100%	0	0	0%	1	0	-100%	0.00	0.00	-100%
Z2 Total malaria cases	17,448	8,825	-49%	8,794	6,558	-25%	26,242	15,383	-41%	19.35	11.34	-41%
Z2 Severe malaria cases	693	329	-53%				693	329	-53%	0.51	0.24	-53%
Z2 Malaria deaths	3	2	-33%	0	0	0%	3	2	-33%	0.00	0.00	-33%
Z3 Total malaria cases	21,258	11,196	-47%	15,295	10,669	-30%	36,553	21,865	-40%	23.02	13.77	-40%
Z3 Severe malaria cases	950	357	-62%				950	357	-62%	0.60	0.22	-62%
Z3 Malaria deaths	30	6	-80%	0	0	0%	30	6	-80%	0.02	0.00	-80%
Z4 Total malaria cases	3,785	2,606	-31%	8	15	88%	3,793	2,621	-31%	n/a	n/a	n/a
Z4 Severe malaria cases	227	95	-58%				227	95	-58%	n/a	n/a	n/a
Z4 Malaria deaths	12	4	-67%	0	0	0%	12	4	-67%	n/a	n/a	n/a

Malaria Cases per VMW by month



Percentage of Pf cases diagnosed by VMW per month



Surveillance Data by District, Jan-Dec 2013

Province / Op. District	Population (x1000)		Health Facility (HIS)									Village Malaria Workers												Incidence (per 1000 pop)									
			All Cases			Severe			Deaths			All Cases			Treated Pf			Treated Pv			Referred Pf			Referred Pv			TPR						
			2012	2013	Change	2012	2013	Change	2012	2013	Change	2012	2013	Change	2012	2013	Change	2012	2013	Change	2012	2013	Change	2012	2013	Change	2012	2013	Change	2012	2013	Change	
Mongkol Borei	252	258	241	173	-28%	3	0	-100%	1	0	-100%	0	0	0%	0	0	0%	0	0	0%	0	0	0%	0	0	0%	0	0	0%	0.96	0.67	-30%	
Ou Chrov	216	221	148	101	-32%	13	6	-54%	0	0	0%	38	41	8%	18	10	-44%	18	24	33%	1	2	100%	1	5	400%	4%	3%	-8%	0.85	0.61	-28%	
Preah Net Preah	148	151	50	32	-36%	1	1	0%	0	0	0%	8	0	-100%	0	0	0%	8	0	-100%	0	0	0%	0	0	0%	1%	0%	-100%	0.39	0.21	-46%	
Thma Puok	128	131	41	19	-54%	0	2	200%	0	0	0%	40	36	-10%	12	18	50%	27	18	-33%	0	0	0%	1	0	-100%	5%	9%	81%	0.62	0.42	-33%	
Banteay Meanchey	744	762	480	325	-32%	17	9	-47%	1	0	-100%	86	77	-10%	30	28	-7%	53	42	-21%	1	2	100%	2	5	150%	3%	4%	23%	0.76	0.52	-31%	
Thma Koul	219	224	204	93	-54%	6	0	-100%	0	0	0%	0	0	0%	0	0	0%	0	0	0%	0	0	0%	0	0	0%	0%	0%	0%	0.93	0.41	-55%	
Mong Russei	179	183	531	220	-59%	6	1	-83%	1	0	-100%	226	65	-71%	83	15	-82%	143	50	-65%	0	0	0%	0	0	0%	18%	9%	-50%	4.23	1.56	-63%	
Sampov Luon	145	148	780	382	-51%	19	8	-58%	0	0	0%	340	183	-46%	88	28	-68%	247	151	-39%	4	2	-50%	1	2	100%	18%	13%	-28%	7.71	3.79	-51%	
Battambang	382	391	1227	610	-50%	81	17	-79%	1	0	-100%	1497	1119	-25%	807	496	-39%	671	604	-10%	16	9	-44%	3	10	233%	30%	25%	-17%	7.08	4.37	-38%	
Sangkae	192	196	120	83	-31%	0	0	0%	0	0	0%	0	0	0%	0	0	0%	0	0	0%	0	0	0%	0	0	0%	0%	0%	0%	0.63	0.42	-32%	
Battambang	1126	1153	2862	1388	-52%	112	26	-77%	2	0	-100%	2063	1367	-34%	982	539	-45%	1061	805	-24%	20	11	-45%	4	12	200%	25%	20%	-19%	4.35	2.37	-46%	
Chamkar Leu - Stueng Trang	172	176	687	306	-55%	32	8	-75%	0	0	0%	360	167	-54%	108	43	-60%	251	124	-51%	1	0	-100%	0	0	0%	36%	22%	-38%	6.07	2.68	-56%	
Choeung Prey - Batheay	205	210	162	117	-28%	3	1	-67%	0	0	0%	0	0	0%	0	0	0%	0	0	0%	0	0	0%	0	0	0%	0%	0%	0%	0.79	0.56	-29%	
Kampong Cham - Kampong Siem	300	307	602	314	-48%	88	33	-63%	7	2	-71%	0	0	0%	0	0	0%	0	0	0%	0	0	0%	0	0	0%	0%	0%	0%	2.01	1.02	-49%	
Kroch Chhmar - Stueng Trang	111	113	236	141	-40%	0	0	0%	0	0	0%	0	0	0%	0	0	0%	0	0	0%	0	0	0%	0	0	0%	0%	0%	0%	2.14	1.25	-42%	
Memut	163	167	372	163	-56%	35	4	-89%	0	0	0%	239	161	-33%	60	61	2%	179	100	-44%	0	0	0%	0	0	0%	13%	7%	-48%	3.75	1.94	-48%	
O Reang Ov - Koh Soutin	89	91	552	498	-10%	0	0	0%	0	0	0%	0	0	0%	0	0	0%	0	0	0%	0	0	0%	0	0	0%	0%	0%	0%	6.20	5.46	-12%	
Ponhea Krek - Dambae	237	243	1279	654	-49%	18	6	-67%	1	0	-100%	252	131	-48%	77	57	-26%	175	74	-58%	0	0	0%	0	0	0%	29%	17%	-42%	6.46	3.23	-50%	
Prey Chhor - Kang Meas	193	198	320	110	-66%	0	0	0%	0	0	0%	0	0	0%	0	0	0%	0	0	0%	0	0	0%	0	0	0%	0%	0%	0%	1.66	0.56	-66%	
Srei Santhor - Kang Meas	149	152	74	49	-34%	0	0	0%	0	0	0%	0	0	0%	0	0	0%	0	0	0%	0	0	0%	0	0	0%	0%	0%	0%	0.50	0.32	-35%	
Tbong Khmum - Kroch Chhmar	224	229	1061	558	-47%	100	34	-66%	3	0	-100%	0	0	0%	0	0	0%	0	0	0%	0	0	0%	0	0	0%	0%	0%	0%	4.74	2.43	-49%	
Kampong Cham	1844	1888	5345	2910	-46%	276	86	-69%	11	2	-82%	851	459	-46%	246	161	-35%	605	298	-51%	1	0	-100%	0	0	0%	23%	12%	-49%	3.36	1.78	-47%	
Kampong Chhnang	234	240	386	218	-44%	20	18	-10%	0	0	0%	0	0	0%	0	0	0%	0	0	0%	0	0	0%	0	0	0%	0%	0%	0%	1.65	0.91	-45%	
Kampong Tralach	160	163	376	143	-62%	19	5	-74%	0	0	0%	0	0	0%	0	0	0%	0	0	0%	0	0	0%	0	0	0%	0%	0%	0%	2.36	0.87	-63%	
Boribo	124	126	257	127	-51%	6	0	-100%	0	0	0%	0	0	0%	0	0	0%	0	0	0%	0	0	0%	0	0	0%	0%	0%	0%	2.08	1.00	-52%	
Kampong Chhnang	518	530	1019	488	-52%	45	23	-49%	0	0	0%	0	0	0%	0	0	0%	0	0	0%	0	0	0%	0	0	0%	0%	0%	0%	0%	1.97	0.92	-53%
Kampong Speu.	429	440	913	326	-64%	54	5	-91%	0	0	0%	1172	607	-48%	419	214	-49%	750	373	-50%	0	5	500%	3	15	400%	29%	20%	-30%	4.85	2.08	-57%	
Kong Pisey	246	252	891	344	-61%	19	2	-89%	0	0	0%	0	0	0%	0	0	0%	0	0	0%	0	0	0%	0	0	0%	0%	0%	0%	3.62	1.37	-62%	
Ou Dongk	112	115	546	401	-27%	5	6	20%	0	0	0%	305	175	-43%	107	78	-27%	196	95	-52%	0	0	0%	2	2	0%	25%	19%	-24%	7.56	4.99	-34%	
Kampong Speu	788	807	2350	1071	-54%	78	13	-83%	0	0	0%	1477	782	-47%	526	292	-44%	949	469	-51%	0	5	500%	5	17	240%	28%	20%	-29%	4.86	2.27	-53%	
Baray and Santuk	254	260	648	278	-57%	6	3	-50%	0	0	0%	355	99	-72%	140	34	-76%	184	55	-70%	21	3	-86%	10	7	-30%	28%	10%	-65%	3.82	1.41	-63%	
Kampong Thom	294	301	919	376	-59%	78	29	-63%	5	1	-80%	1842	1179	-36%	690	416	-40%	1026	716	-30%	67	11	-84%	59	36	-39%	31%	26%	-16%	8.98	5.02	-44%	
Stong	146	150	216	74	-66%	12	4	-67%	1	0	-100%	380	209	-45%	106	65	-39%	274	144	-47%	0	0	0%	0	0	0%	17%	9%	-46%	4.07	1.89	-54%	
Kampong Thom	694	711	1783	728	-59%	96	36	-63%	6	1	-83%	2577	1487	-42%	936	516	-45%	1484	915	-38%	88	14	-84%	69	43	-38%	27%	19%	-31%	6.06	3.04	-50%	
Angkor Chey	113	116	90	53	-41%	9	4	-56%	0	0	0%	0	0	0%	0	0	0%	0	0	0%	0	0	0%	0	0	0%	0%	0%	0%	0.79	0.46	-42%	
Chhouk	209	214	852	458	-46%	81	44	-46%	0	0	0%	676	326	-52%	140	80	-43%	536	240	-55%	0	3	300%	0	3	300%	25%	14%	-45%	7.32	3.64	-50%	
Kampong Trach	164	168	118	32	-73%	0	0	0%	0	0	0%	0	0	0%	0	0	0%	0	0	0%	0	0	0%	0	0	0%	0%	0%	0%	0.72	0.19	-74%	
Kampot	158	161	771	234	-70%	13	1	-92%	0	0	0%	326	146	-55%	111	65	-41%	215	81	-62%	0	0	0%	0	0	0%	31%	32%	3%	6.96	2.35	-66%	
Kampot	643	659	1831	777	-58%	103	49	-52%	0	0	0%	1002	472	-53%	251	145	-42%	751	321	-57%	0	3	300%	0	3	300%	27%	17%	-37%	4.40	1.89	-57%	

Surveillance Data by District, Jan-Dec 2013

Province / Op. District	Population (x1000)		Health Facility (HIS)									Village Malaria Workers												Incidence (per 1000 pop)										
			All Cases			Severe			Deaths			All Cases			Treated Pf			Treated Pv			Referred Pf			Referred Pv			TPR							
			2012	2013	Change	2012	2013	Change	2012	2013	Change	2012	2013	Change	2012	2013	Change	2012	2013	Change	2012	2013	Change	2012	2013	Change	2012	2013	Change	2012	2013	Change		
Ang Snuol	0	0	46	28	-39%	0	0	0%	0	0	0%	0	0	0%	0	0	0%	0	0	0%	0	0	0%	0%	0%	0%	0	0	0%	0%	0%	0%		
Kean Svay	0	0	9	37	311%	0	1	100%	0	0	0%	0	0	0%	0	0	0%	0	0	0%	0	0	0%	0%	0%	0%	0	0	0%	0%	0%	0%		
Koh Thom	0	0	121	83	-31%	0	0	0%	0	0	0%	0	0	0%	0	0	0%	0	0	0%	0	0	0%	0%	0%	0%	0	0	0%	0%	0%	0%		
Ksach Kandal	0	0	78	46	-41%	0	0	0%	0	0	0%	0	0	0%	0	0	0%	0	0	0%	0	0	0%	0%	0%	0%	0	0	0%	0%	0%	0%		
Muk Kam Poul	0	0	91	77	-15%	5	0	-100%	0	0	0%	0	0	0%	0	0	0%	0	0	0%	0	0	0%	0%	0%	0%	0	0	0%	0%	0%	0%		
Ponhea Leu	0	0	9	31	244%	0	0	0%	0	0	0%	0	0	0%	0	0	0%	0	0	0%	0	0	0%	0%	0%	0%	0	0	0%	0%	0%	0%		
Saang	0	0	56	192	243%	0	1	100%	0	0	0%	0	0	0%	0	0	0%	0	0	0%	0	0	0%	0%	0%	0%	0	0	0%	0%	0%	0%		
Takhmau	0	0	63	3	-95%	1	1	0%	0	0	0%	0	0	0%	0	0	0%	0	0	0%	0	0	0%	0%	0%	0%	0	0	0%	0%	0%	0%		
Kandal	1390	1424	473	497	5%	6	3	-50%	0	0	0%	0	0	0%	0	0	0%	0	0	0%	0	0	0%	0%	0%	0.34	0.35	3%						
Smach Mean Chey	63	65	281	96	-66%	18	8	-56%	0	0	0%	243	89	-63%	69	32	-54%	174	57	-67%	0	0	0%	0	0	0%	15%	11%	-27%	8.28	2.86	-66%		
Srae Ambel	67	68	128	51	-60%	9	6	-33%	0	0	0%	22	7	-68%	3	2	-33%	18	5	-72%	0	0	0%	1	0	-100%	16%	8%	-50%	2.24	0.85	-62%		
Koh Kong	129	132	409	147	-64%	27	14	-48%	0	0	0%	265	96	-64%	72	34	-53%	192	62	-68%	0	0	0%	1	0	-100%	15%	11%	-30%	5.21	1.84	-65%		
Chhlong	100	102	1095	450	-59%	181	28	-85%	2	0	-100%	256	135	-47%	101	58	-43%	154	75	-51%	1	1	0%	0	1	100%	25%	22%	-13%	13.52	5.70	-58%		
Kratie	244	250	3103	1847	-40%	127	58	-54%	4	1	-75%	3142	2333	-26%	2222	1681	-24%	919	649	-29%	1	1	0%	0	2	200%	44%	41%	-7%	25.62	16.74	-35%		
Kratie	350	359	4198	2297	-45%	308	86	-72%	6	1	-83%	3398	2468	-27%	2325	1740	-25%	1073	726	-32%	2	2	0%	0	3	300%	42%	39%	-8%	21.68	13.28	-39%		
Sen Monorom	65	67	1431	1133	-21%	10	5	-50%	0	1	100%	1391	991	-29%	864	587	-32%	525	404	-23%	2	0	-100%	0	0	0%	33%	0%	-100%	43.12	31.72	-26%		
Mondul Kiri	67	69	1431	1133	-21%	10	5	-50%	0	1	100%	1391	991	-29%	864	587	-32%	525	404	-23%	2	0	-100%	0	0	0%	33%	22%	-33%	42.05	30.93	-26%		
Cheung	0	0	1	2	100%	0	0	0%	0	0	0%	0	0	0%	0	0	0%	0	0	0%	0	0	0%	0	0	0%	0%	0%	0%	0%	0%	0%		
Kandal	0	0	205	218	6%	3	1	-67%	0	0	0%	0	0	0%	0	0	0%	0	0	0%	0	0	0%	0	0	0%	0%	0%	0%	0%	0%	0%		
Lech	0	0	10	0	-100%	0	0	0%	0	0	0%	0	0	0%	0	0	0%	0	0	0%	0	0	0%	0	0	0%	0%	0%	0%	0%	0%	0%		
Tbong	0	0	17	25	47%	0	0	0%	0	0	0%	0	0	0%	0	0	0%	0	0	0%	0	0	0%	0	0	0%	0%	0%	0%	0%	0%	0%		
MOH Central Office	0	0	276	146	-47%	131	66	-50%	7	4	-43%	0	0	0%	0	0	0%	0	0	0%	0	0	0%	0	0	0%	0%	0%	0%	0%	0%	0%		
Phnom Penh	1456	1491	509	391	-23%	134	67	-50%	7	4	-43%	0	0	0%	0	0	0%	0	0	0%	0	0	0%	0	0	0%	0%	0%	0%	0%	0%	0.35	0.26	-25%
Tbeng Meanchey	181	185	4574	2669	-42%	309	154	-50%	0	0	0%	1746	1797	3%	618	652	6%	1065	1120	5%	21	16	-24%	42	9	-79%	19%	15%	-21%	34.61	23.99	-31%		
Preah Vihear	185	190	4574	2669	-42%	309	154	-50%	0	0	0%	1746	1797	3%	619	653	5%	1068	1120	5%	21	16	-24%	42	9	-79%	19%	15%	-21%	33.80	23.42	-31%		
Kamchay Mear	0	0	167	91	-46%	4	0	-100%	0	0	0%	0	0	0%	0	0	0%	0	0	0%	0	0	0%	0	0	0%	0%	0%	0%	0%	0%	0%		
Kampong Trabek	0	0	28	7	-75%	0	0	0%	0	0	0%	0	0	0%	0	0	0%	0	0	0%	0	0	0%	0	0	0%	0%	0%	0%	0%	0%	0%		
Mesang	0	0	16	2	-88%	1	0	-100%	0	0	0%	0	0	0%	0	0	0%	0	0	0%	0	0	0%	0	0	0%	0%	0%	0%	0%	0%	0%		
Neak Loeung	0	0	44	81	84%	2	4	100%	0	0	0%	0	0	0%	0	0	0%	0	0	0%	0	0	0%	0	0	0%	0%	0%	0%	0%	0%	0%		
Peareang	0	0	81	36	-56%	2	9	350%	0	0	0%	0	0	0%	0	0	0%	0	0	0%	0	0	0%	0	0	0%	0%	0%	0%	0%	0%	0%		
Preah Sdach	0	0	113	38	-66%	0	0	0%	0	0	0%	0	0	0%	0	0	0%	0	0	0%	0	0	0%	0	0	0%	0%	0%	0%	0%	0%	0%		
Prey Veng	0	0	20	32	60%	13	2	-85%	0	0	0%	0	0	0%	0	0	0%	0	0	0%	0	0	0%	0	0	0%	0%	0%	0%	0%	0%	0%		
Prey Veng	1041	1066	469	287	-39%	22	15	-32%	0	0	0%	0	0	0%	0	0	0%	0	0	0%	0	0	0%	0	0	0%	0%	0%	0%	0%	0.45	0.27	-40%	
Bakan	137	141	457	182	-60%	9	0	-100%	0	0	0%	0	0	0%	0	0	0%	0	0	0%	0	0	0%	0	0	0%	0%	0%	0%	3.33	1.29	-61%		
Sampov Meas	137	141	2466	919	-63%	86	26	-70%	0	0	0%	2113	1161	-45%	903	303	-66%	1197	855	-29%	6	1	-83%	7	2	-71%	45%	27%	-40%	33.27	14.78	-56%		
Pursat	436	446	2923	1101	-62%	95	26	-73%	0	0	0%	2113	1159	-45%	903	302	-67%	1197	855	-29%	6	1	-83%	7	2	-71%	45%	27%	-40%	11.52	5.06	-56%		
Ratanakiri	166	170	4141	2283	-45%	140	81	-42%	1	1	0%	3519	1743	-50%	2411	1135	-53%	1102	600	-46%	6	3	-50%	0	5	500%	27%	16%	-42%	46.16	23.66	-49%		
Ratanak Kiri	165	169	4141	2283	-45%	140	81	-42%	1	1	0%	3519	1743	-50%	2414	1135	-53%	1102	600	-46%	6	3	-50%	0	5	500%	27%	16%	-42%	46.36	23.76	-49%		

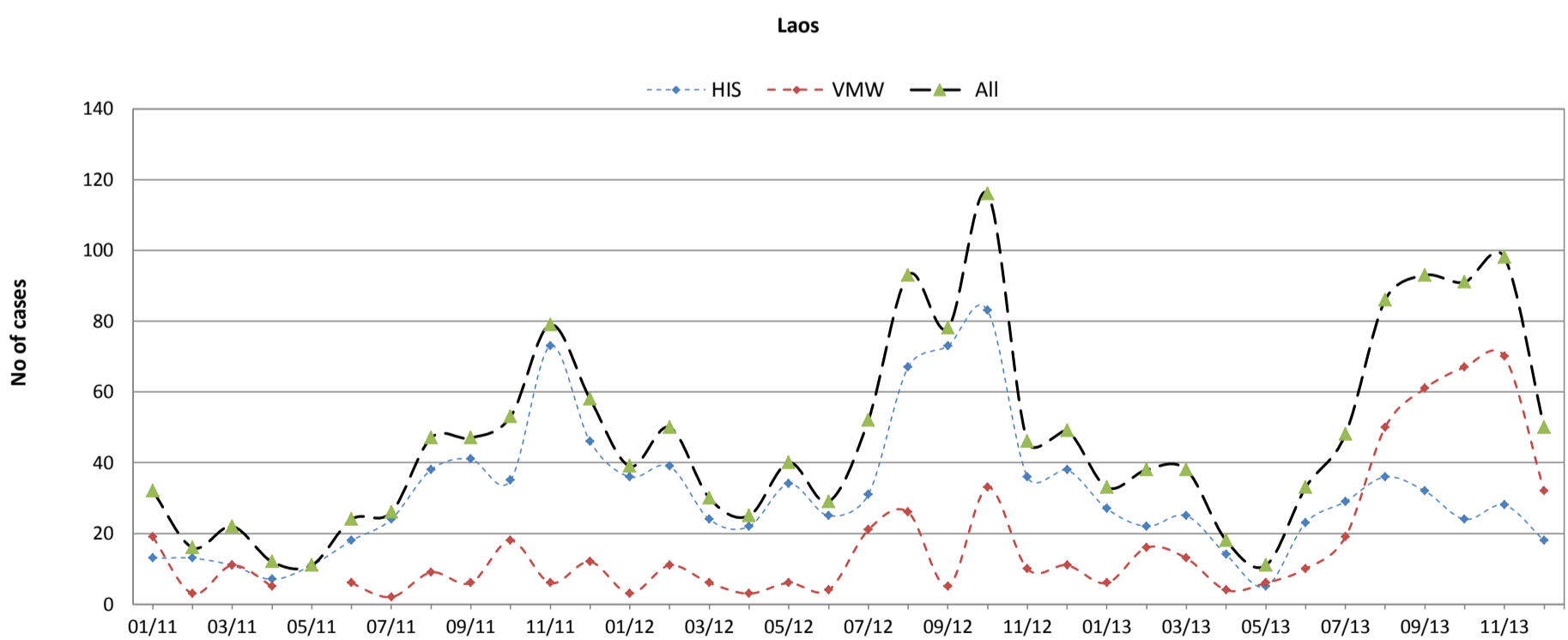
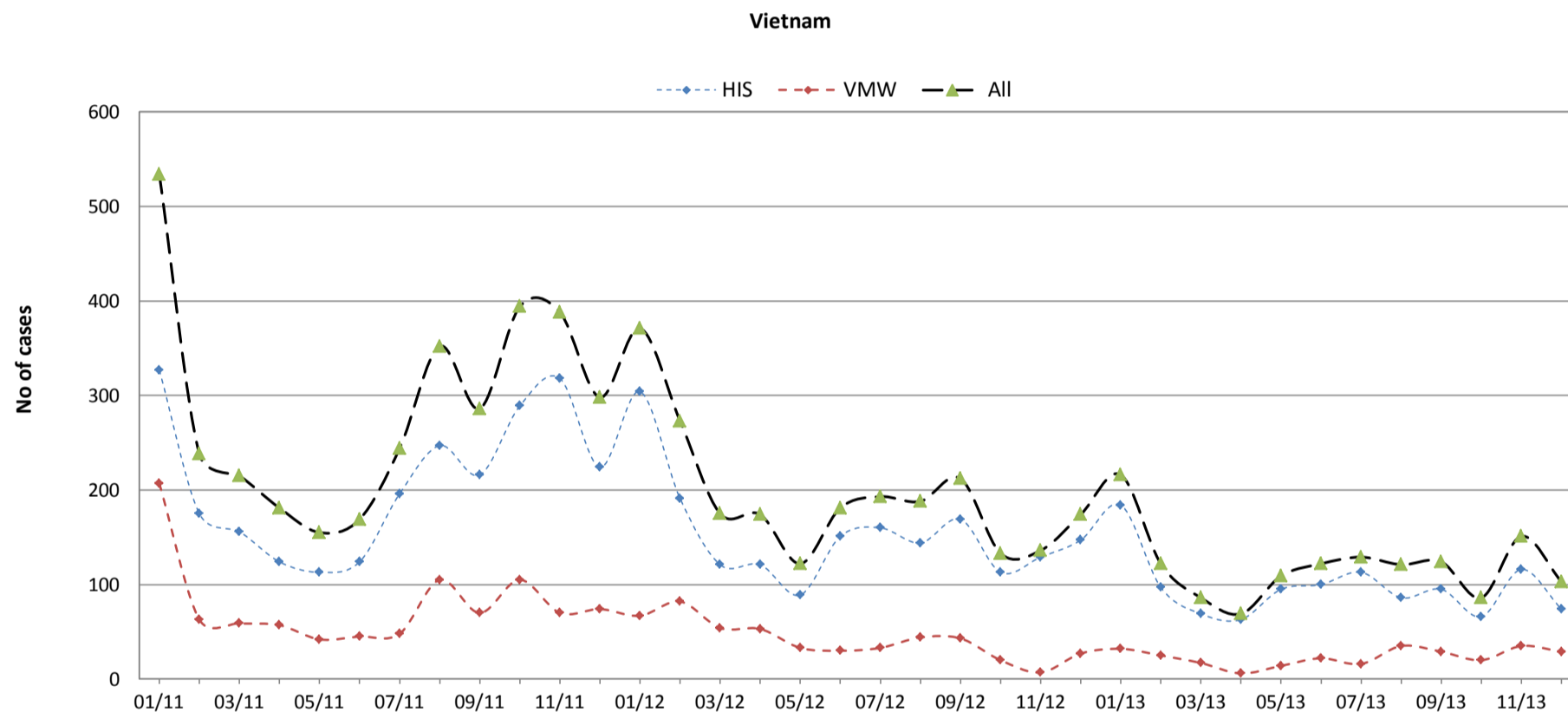
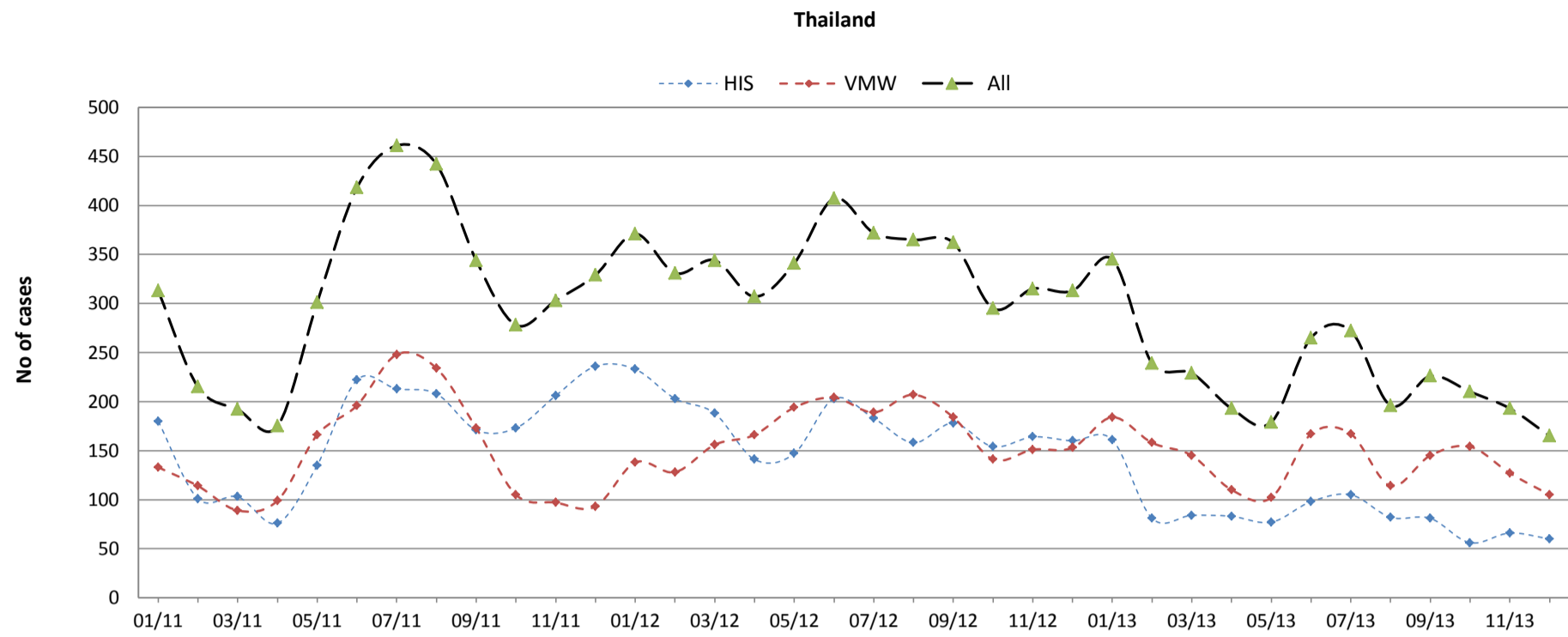
Surveillance Data by District, Jan-Dec 2013

Province / Op. District	Population (x1000)		Health Facility (HIS)									Village Malaria Workers												Incidence (per 1000 pop)									
			All Cases			Severe			Deaths			All Cases			Treated Pf			Treated Pv			Referred Pf			Referred Pv			TPR						
			2012	2013	Change	2012	2013	Change	2012	2013	Change	2012	2013	Change	2012	2013	Change	2012	2013	Change	2012	2013	Change	2012	2013	Change	2012	2013	Change	2012	2013	Change	
n	n	%	n	n	%	n	n	%	n	n	%	n	n	%	n	n	%	n	n	%	n	n	%	n	n	%	n	n	%				
Kralanh	89	91		247	182	-26%	31	18	-42%	0	0	0%	225	231	3%	124	125	1%	100	105	5%	1	0	-100%	0	1	100%	6%	8%	16%	5.30	4.52	-15%
Siem Reap	395	404		1220	631	-48%	77	18	-77%	2	2	0%	726	213	-71%	195	44	-77%	512	168	-67%	6	1	-83%	13	0	-100%	29%	12%	-61%	4.88	2.08	-57%
Sot Nikum	278	285		1256	673	-46%	1	0	-100%	0	0	0%	529	277	-48%	199	79	-60%	330	197	-40%	0	0	0%	0	1	100%	21%	12%	-41%	6.42	3.33	-48%
Ankor Chhum	215	220		983	429	-56%	2	1	-50%	0	0	0%	459	213	-54%	141	57	-60%	313	134	-57%	1	9	800%	4	13	225%	14%	8%	-44%	6.68	2.81	-58%
Siem Reap	980	1003		3706	1915	-48%	111	37	-67%	2	2	0%	1931	921	-52%	656	303	-54%	1251	594	-53%	8	10	25%	17	15	-12%	16%	9%	-43%	5.73	2.80	-51%
Sihanouk	241	247		295	135	-54%	3	0	-100%	0	0	0%	53	8	-85%	14	5	-64%	38	3	-92%	0	0	0%	1	0	-100%	34%	20%	-43%	1.44	0.58	-60%
Sihanoukville	243	249		295	135	-54%	3	0	-100%	0	0	0%	53	8	-85%	14	5	-64%	38	3	-92%	0	0	0%	1	0	-100%	34%	20%	-43%	1.43	0.57	-60%
Steung Treng	122.02	124.95		2418	1289	-47%	68	39	-43%	6	0	-100%	3709	3684	-1%	2479	2360	-5%	1219	1231	1%	9	66	633%	2	27	1250%	35%	34%	-5%	50.12	39.06	-22%
Stung Treng	122.02	124.95		2418	1289	-47%	68	39	-43%	6	0	-100%	3709	3684	-1%	2479	2362	-5%	1219	1232	1%	9	66	633%	2	27	1250%	35%	34%	-5%	50.12	39.08	-22%
Chi Phu	0.00	0.00		17	9	-47%	3	0	-100%	0	0	0%	0	0	0%	0	0	0%	0	0	0%	0	0	0%	0	0	0%	0%	0%	0%	0%	0%	0%
Romeas Hek	0.00	0.00		97	22	-77%	9	4	-56%	0	0	0%	0	0	0%	0	0	0%	0	0	0%	0	0	0%	0	0	0%	0%	0%	0%	0%	0%	0%
Svay Rieng	0.00	0.00		98	29	-70%	20	1	-95%	3	0	-100%	0	0	0%	0	0	0%	0	0	0%	0	0	0%	0	0	0%	0%	0%	0%	0%	0%	0%
Svay Rieng	530.83	543.57		212	60	-72%	32	5	-84%	3	0	-100%	0	0	0%	0	0	0%	0	0	0%	0	0	0%	0	0	0%	0%	0%	0%	0%	0%	0%
Ang Rokar	127.17	130.22		643	253	-61%	9	2	-78%	0	0	0%	29	0	-100%	1	0	-100%	28	0	-100%	0	0	0%	0	0	0%	0%	0%	0%	5.28	1.94	-63%
Bati	199.98	204.78		41	37	-10%	2	0	-100%	0	0	0%	0	0	0%	0	0	0%	0	0	0%	0	0	0%	0	0	0%	0%	0%	0%	0.21	0.18	-12%
Daun Keo	202.75	207.61		132	44	-67%	10	0	-100%	1	0	-100%	0	0	0%	0	0	0%	0	0	0%	0	0	0%	0	0	0%	0%	0%	0%	0.65	0.21	-67%
Kirivong	248.82	254.79		251	148	-41%	2	0	-100%	0	0	0%	0	0	0%	0	0	0%	0	0	0%	0	0	0%	0	0	0%	0%	0%	0%	1.01	0.58	-42%
Prey Kabass	150.09	153.69		28	22	-21%	2	0	-100%	0	0	0%	0	0	0%	0	0	0%	0	0	0%	0	0	0%	0	0	0%	0%	0%	0%	0.19	0.14	-23%
Takeo	928.80	951.09		1095	504	-54%	25	2	-92%	1	0	-100%	29	0	-100%	1	0	-100%	28	0	-100%	0	0	0%	0	0	0%	26%	0%	-100%	1.21	0.53	-56%
Samraong	202.75	207.61		2546	1496	-41%	65	76	17%	0	0	0%	2319	2540	10%	259	309	19%	2016	2091	4%	6	47	683%	38	93	145%	29%	31%	5%	23.78	18.77	-21%
Oddar Meanchey	202.75	207.61		2546	1496	-41%	65	76	17%	0	0	0%	2319	2540	10%	259	310	20%	2018	2091	4%	6	47	683%	38	93	145%	29%	31%	5%	23.79	18.77	-21%
Kep	39.31	40.25		60	32	-47%	0	0	0%	0	0	0%	0	0	0%	0	0	0%	0	0	0%	0	0	0%	0	0	0%	0%	0%	0%	1.53	0.79	-48%
Kep	39.31	40.25		60	32	-47%	0	0	0%	0	0	0%	0	0	0%	0	0	0%	0	0	0%	0	0	0%	0	0	0%	0%	0%	0%	1.53	0.79	-48%
Pailin	77.38	79.23		424	212	-50%	17	8	-53%	0	0	0%	459	446	-3%	97	79	-19%	322	340	6%	37	3	-92%	3	24	700%	26%	22%	-14%	10.89	7.96	-27%
Pailin	77.37	79.23		424	212	-50%	17	8	-53%	0	0	0%	459	446	-3%	100	79	-21%	322	340	6%	37	3	-92%	3	24	700%	26%	22%	-14%	10.93	7.96	-27%
National Total	14702.42	15055.15		45553	24135	-47%	2099	860	-59%	46	12	-74%	28988	20497	-29%	13677	9191	-33%	#####	10877	-27%	207	183	-12%	191	258	35%	27%	21%	-23%	5.04	2.94	-42%

Malaria Bulletin Ver 2 - Generated from CNM Malaria Database on 06/02/2014 16:30:39 including data from Online MOH HIS

CAMBODIA MALARIA BULLETIN

MALARIA TRENDS IN BORDER AREAS*



* HIS data from health facilities serving border villages plus VMW data from border villages (<10km from the border).