

# CAMBODIA MALARIA BULLETIN

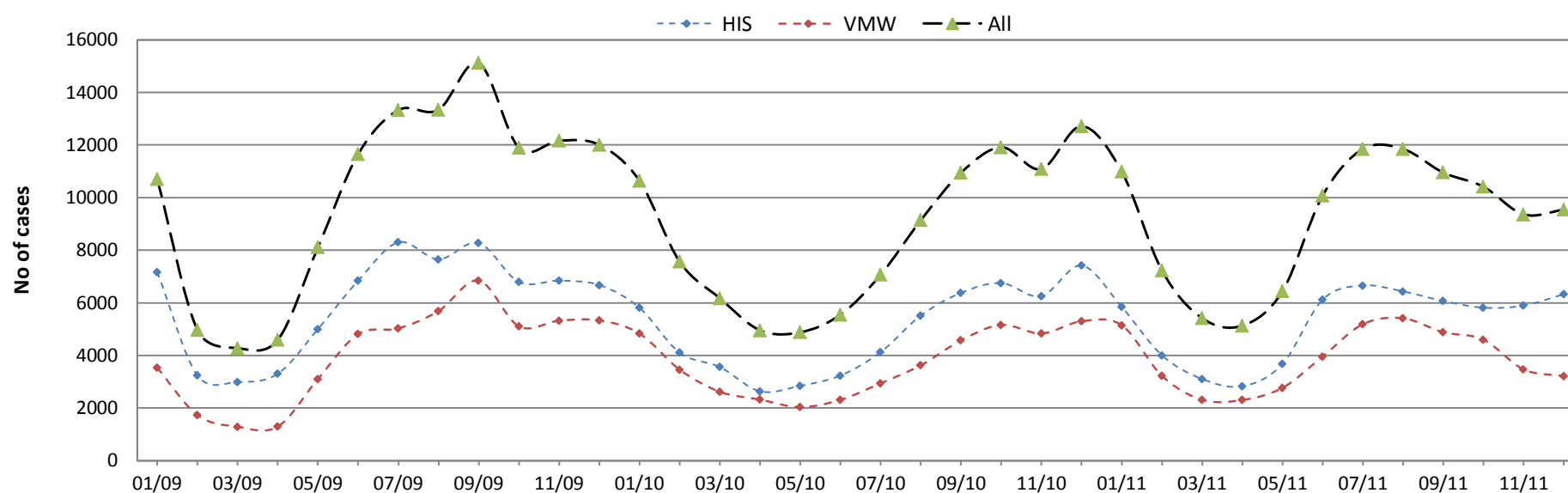
DECEMBER 2011 BULLETIN, DATA TO 4TH QUARTER, CNM, CAMBODIA

Estimated coverage (possession) with LLIN or retreated mosquito net	
No. of persons at risk of malaria (pop of target villages)	3,204,193
No. of LLIN distributed YTD	768,390
No. of LLIN distributed YTD	433,442
No. of conventional nets distributed and retreated YTD	329,727
No. of long lasting nets distributed in previous 3 years	2,326,287
Estimated coverage with LLIN / treated net (1 net / 1 pers)	83%

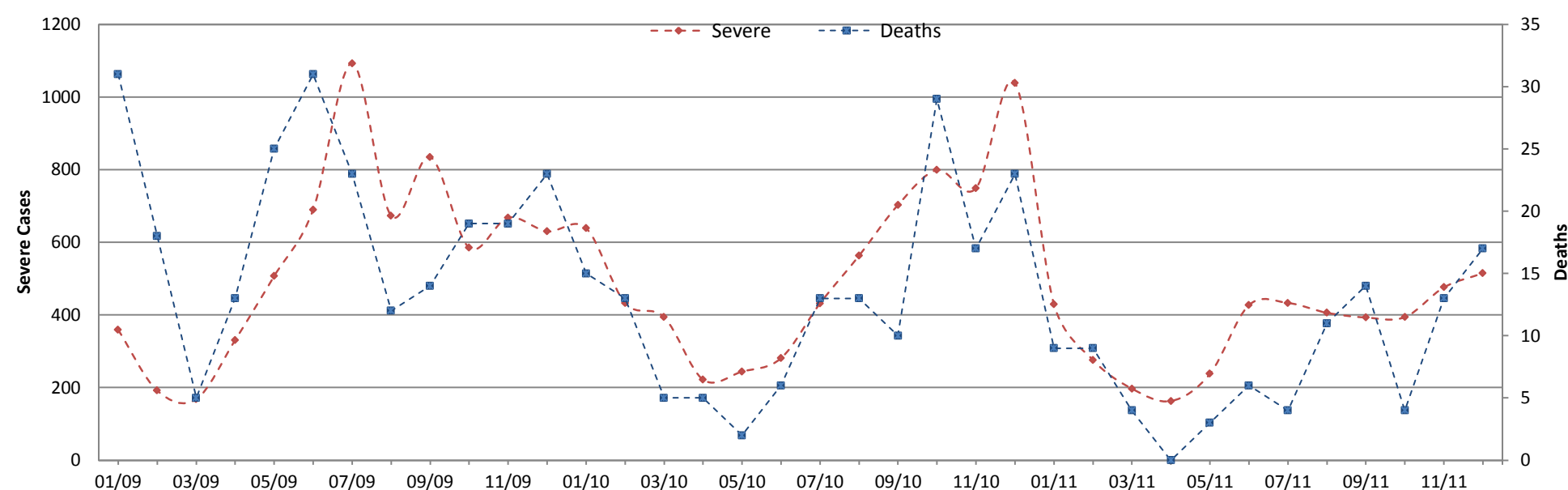
Indicators	HIS			VMW			Total		
	2010	2011	Change	2010	2011	Change	2010	2011	Change
Total malaria cases	58,621	62,770	7%	43,852	46,218	3%	102,473	108,988	6%
Severe malaria cases	6,498	4,347	-33%				6,498	4,347	-33%
Malaria deaths	151	94	-38%	3	2	-33%	154	96	-38%
Test positivity rate	34%	36%	5%	36%	35%	-1%			

## TRENDS IN SURVEILLANCE

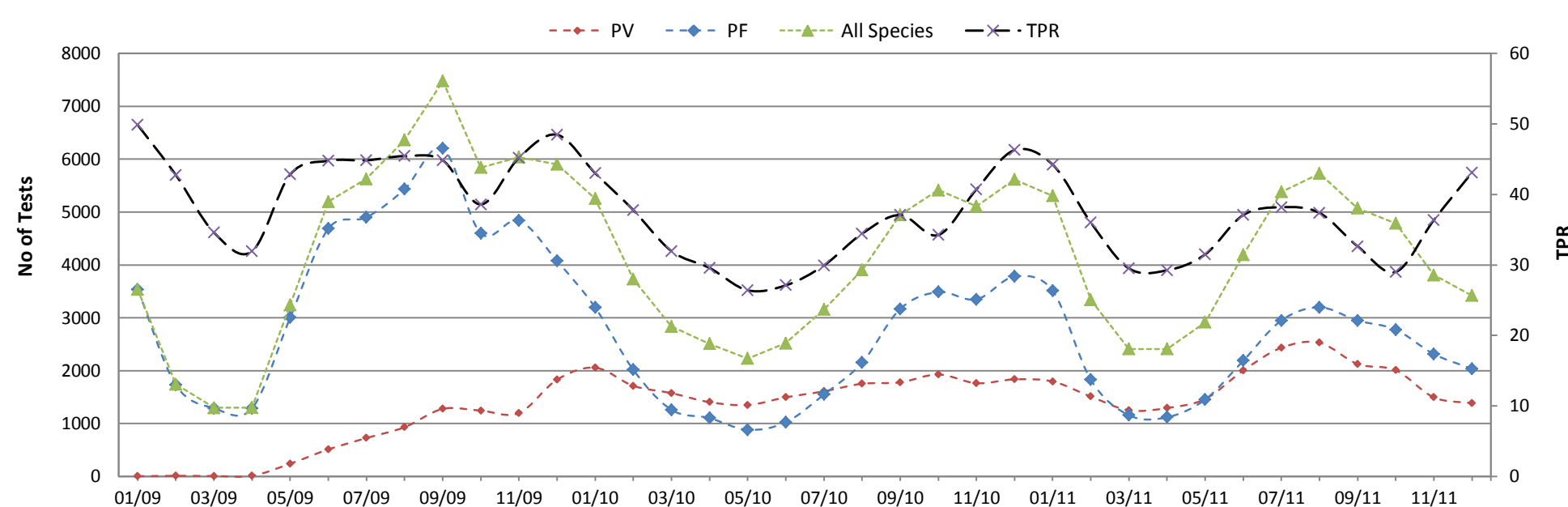
Treated malaria cases from HIS and VMW by month



Severe malaria cases and deaths from HIS by month



VMW test results by month

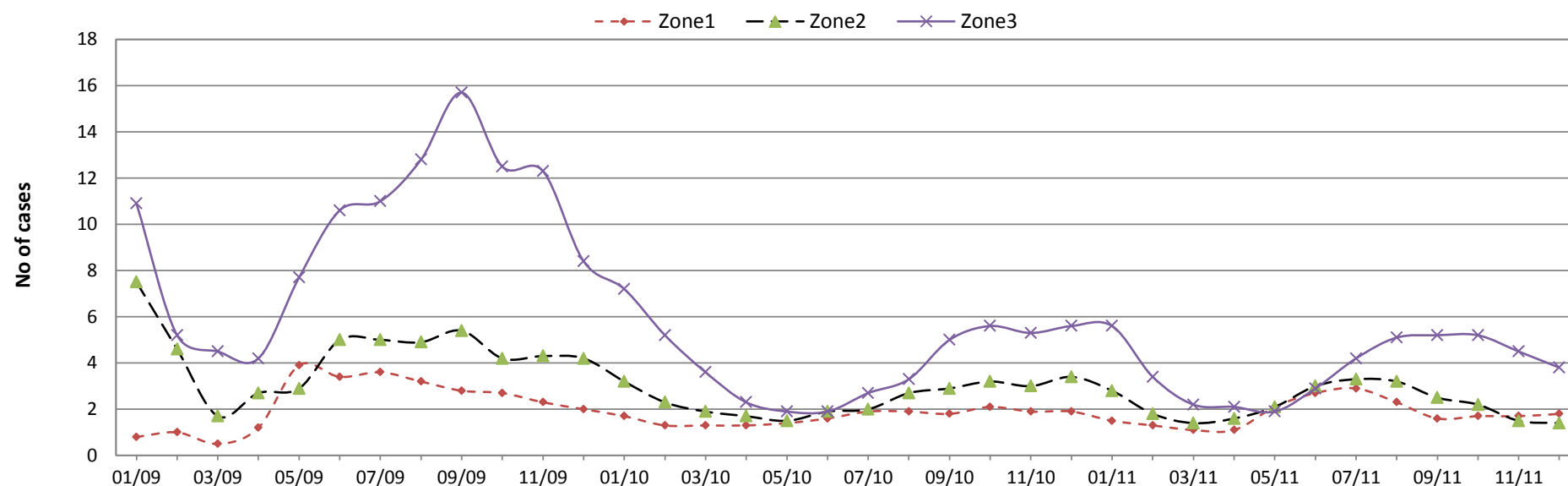


CONTAINMENT INDICATORS

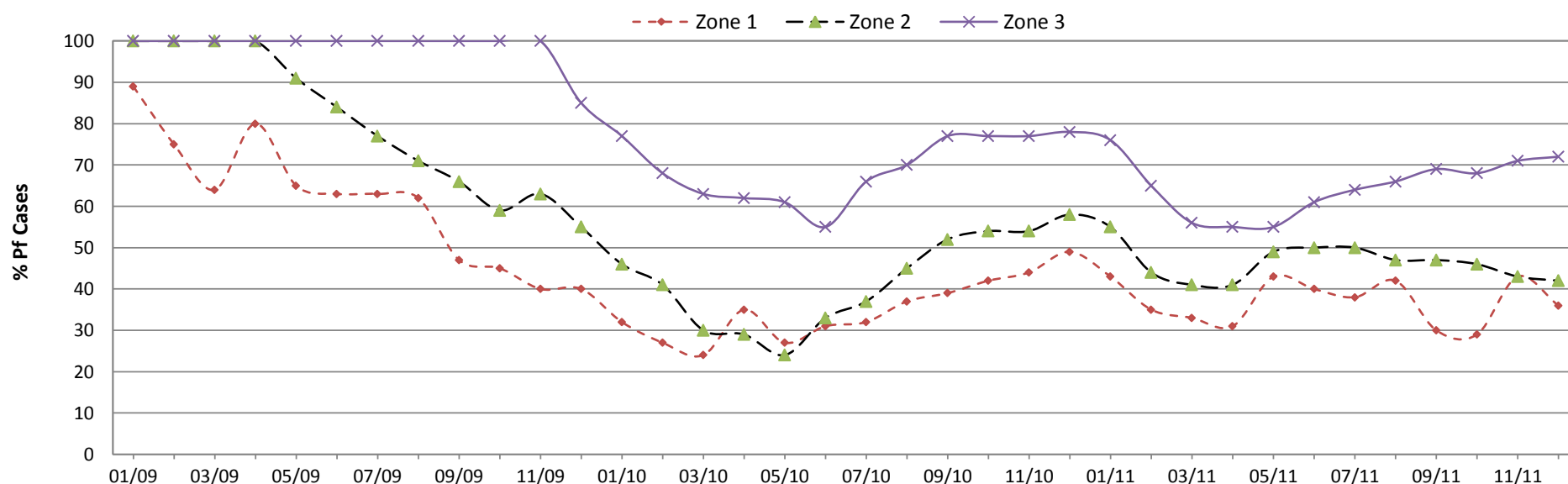
Estimated coverage (possession) with LLIN or retreated mosquito net					VMW RDT tests						
Indicators	Zone 1	Zone 2	Zone 3	Total	Zone	TPR			%Pf		
						2010	2011	Change	2010	2011	Change
No. of persons at risk of malaria (pop of target villages)	385,063	1,286,837	1,527,494	3,204,193	Zone 1	30%	34%	14%	36%	38%	5%
No. of LLIN distributed YTD	6,084	35,059	727,247	768,390	Zone 2	32%	31%	-4%	45%	48%	7%
No. of LLIHN distributed YTD	18,637	190,304	224,343	433,284	Zone 3	41%	40%	-2%	72%	67%	-7%
No. of conventional nets distributed and retreated YTD	39,471	77,916	212,265	329,652							
No. of long lasting nets distributed in previous 3 years	302,611	720,183	1,299,909	2,322,703							
Estimated coverage with LLIN / treated net (1 net / 1 pers)	89%	62%	99%	83%							

National Surveillance data for the period Jan - Dec												
Indicators	HIS treated cases			VMW treated cases			Total treated cases			Incidence (per 1000 pop)		
	2010	2011	Change	2010	2011	Change	2010	2011	Change	2010	2011	Change
Z1 Total malaria cases	5,338	4,914	-8%	4,706	5,029	7%	10,044	9,943	-1%	26.08	25.82	-1%
Z1 Severe malaria cases	327	409	25%				327	409	25%	0.85	1.06	25%
Z1 Malaria deaths	4	4	0%	0	0	0%	4	4	0%	0.01	0.01	0%
Z2 Total malaria cases	17,231	18,614	8%	16,274	17,070	5%	33,505	35,684	7%	26.04	27.73	7%
Z2 Severe malaria cases	1,622	1,262	-22%				1,622	1,262	-22%	1.26	0.98	-22%
Z2 Malaria deaths	33	19	-42%	2	1	-50%	33	19	-42%	0.03	0.01	-42%
Z3 Total malaria cases	25,984	23,952	-8%	22,872	24,119	5%	48,856	48,071	-2%	31.98	31.47	-2%
Z3 Severe malaria cases	3,339	1,790	-46%				3,339	1,790	-46%	2.19	1.17	-46%
Z3 Malaria deaths	96	53	-45%	1	1	0%	96	53	-45%	0.06	0.03	-45%
Z4 Total malaria cases	10,068	15,290	52%	2	0	-100%	10,070	15,290	52%	n/a	n/a	n/a
Z4 Severe malaria cases	1,210	886	-27%				1,210	886	-27%	n/a	n/a	n/a
Z4 Malaria deaths	18	18	0%	0	0	0%	18	18	0%	n/a	n/a	n/a

Malaria Cases per VMW by month



Percentage of Pf cases diagnosed by VMW per month





Surveillance Data by District, Jan-Dec 2011

Province / Op. District	Population (x1000)		Health Facility (HIS)									Village Malaria Workers												Incidence (per 1000 pop)										
			All Cases			Severe			Deaths			All Cases			Treated Pf			Treated Pv			Referred Pf			Referred Pv			TPR			2010	2011	Change		
			2010	2011	Change	2010	2011	Change	2010	2011	Change	2010	2011	Change	2010	2011	Change	2010	2011	Change	2010	2011	Change	2010	2011	Change								
Kampot	148	150	1535	1567	2%	117	111	-5%	4	1	-75%	331	281	0	227	159	-30%	102	122	20%	1	0	-100%	1	0	-100%	73%	71%	-3%	12.61	12.31	-2%		
Ang Snuol	0	0	73	9	-88%	21	0	-100%	0	0	0%	0	0	0	0	0	0%	0	0	0%	0	0	0%	0	0	0%	0%	0%	0%			0%		
Kean Svay	0	0	37	31	-16%	0	0	0%	0	0	0%	0	0	0	0	0	0%	0	0	0%	0	0	0%	0	0	0%	0%	0%	0%			0%		
Koh Thom	0	0	41	66	61%	2	1	-50%	0	0	0%	0	0	0	0	0	0%	0	0	0%	0	0	0%	0	0	0%	0%	0%	0%			0%		
Ksach Kandal	0	0	46	66	43%	0	0	0%	0	0	0%	0	0	0	0	0	0%	0	0	0%	0	0	0%	0	0	0%	0%	0%	0%			0%		
Muk Kam Poul	0	0	84	87	4%	4	7	75%	0	0	0%	0	0	0	0	0	0%	0	0	0%	0	0	0%	0	0	0%	0%	0%	0%			0%		
Ponhea Leu	0	0	14	4	-71%	0	0	0%	0	0	0%	0	0	0	0	0	0%	0	0	0%	0	0	0%	0	0	0%	0%	0%	0%			0%		
Saang	0	0	111	358	223%	0	0	0%	0	0	0%	0	0	0	0	0	0%	0	0	0%	0	0	0%	0	0	0%	0%	0%	0%			0%		
<b>Kandal</b>	<b>1304</b>	<b>1324</b>	<b>535</b>	<b>700</b>	<b>31%</b>	<b>32</b>	<b>22</b>	<b>-31%</b>	<b>0</b>	<b>0</b>	<b>0%</b>	<b>0</b>	<b>0</b>	<b>0</b>	<b>0</b>	<b>0</b>	<b>0%</b>	<b>0</b>	<b>0</b>	<b>0%</b>	<b>0</b>	<b>0</b>	<b>0%</b>	<b>0</b>	<b>0</b>	<b>0%</b>	<b>0%</b>	<b>0%</b>	<b>0%</b>	<b>0%</b>	<b>0%</b>	<b>0.41</b>	<b>0.53</b>	<b>29%</b>
Takhmau	0	0	129	79	-39%	5	14	180%	0	0	0%	0	0	0%	0	0	0%	0	0	0%	0	0	0%	0	0	0%	0%	0%	0%			0%		
Smach Mean Chey	59	60	400	532	33%	64	62	-3%	2	0	-100%	317	672	112%	156	292	87%	154	368	139%	2	12	500%	5	0	-100%	26%	33%	26%	11.97	19.79	65%		
<b>Koh Kong</b>	<b>121</b>	<b>123</b>	<b>671</b>	<b>1029</b>	<b>53%</b>	<b>136</b>	<b>189</b>	<b>39%</b>	<b>3</b>	<b>1</b>	<b>-67%</b>	<b>400</b>	<b>874</b>	<b>119%</b>	<b>213</b>	<b>402</b>	<b>89%</b>	<b>180</b>	<b>452</b>	<b>151%</b>	<b>2</b>	<b>18</b>	<b>800%</b>	<b>5</b>	<b>2</b>	<b>-60%</b>	<b>27%</b>	<b>35%</b>	<b>33%</b>	<b>8.79</b>	<b>15.32</b>	<b>74%</b>		
Srae Ambel	62	63	271	497	83%	72	127	76%	1	1	0%	83	202	143%	57	110	93%	26	84	223%	0	6	600%	0	2	200%	30%	54%	79%	5.67	10.89	92%		
Chhlong	94	95	1460	1139	-22%	447	306	-32%	2	2	0%	589	614	4%	419	388	-7%	162	221	36%	0	1	100%	8	4	-50%	50%	47%	-6%	21.80	18.39	-16%		
<b>Kratie</b>	<b>328</b>	<b>334</b>	<b>6226</b>	<b>5180</b>	<b>-17%</b>	<b>787</b>	<b>615</b>	<b>-22%</b>	<b>17</b>	<b>15</b>	<b>-12%</b>	<b>4790</b>	<b>4450</b>	<b>-7%</b>	<b>3502</b>	<b>3104</b>	<b>-11%</b>	<b>1277</b>	<b>1340</b>	<b>5%</b>	<b>1</b>	<b>2</b>	<b>100%</b>	<b>10</b>	<b>4</b>	<b>-60%</b>	<b>56%</b>	<b>53%</b>	<b>-6%</b>	<b>33.50</b>	<b>28.85</b>	<b>-14%</b>		
Kratie	229	232	4766	4041	-15%	340	309	-9%	15	13	-13%	4201	3836	-9%	3083	2716	-12%	1115	1119	0%	1	1	0%	2	0	-100%	58%	0%	-100%	39.22	33.94	-13%		
<b>Mondul Kiri</b>	<b>63</b>	<b>64</b>	<b>2864</b>	<b>2034</b>	<b>-29%</b>	<b>98</b>	<b>52</b>	<b>-47%</b>	<b>1</b>	<b>1</b>	<b>0%</b>	<b>2614</b>	<b>1651</b>	<b>-37%</b>	<b>2032</b>	<b>1162</b>	<b>-43%</b>	<b>571</b>	<b>487</b>	<b>-15%</b>	<b>6</b>	<b>2</b>	<b>-67%</b>	<b>5</b>	<b>0</b>	<b>-100%</b>	<b>44%</b>	<b>32%</b>	<b>-27%</b>	<b>86.94</b>	<b>57.68</b>	<b>-34%</b>		
Sen Monorom	61	62	2864	2034	-29%	98	52	-47%	1	1	0%	2614	1651	-37%	2032	1162	-43%	571	487	-15%	6	2	-67%	5	0	-100%	44%	32%	-27%	89.16	59.15	-34%		
Cheung	0	0	0	2	200%	0	0	0%	0	0	0%	0	0	0%	0	0	0%	0	0	0%	0	0	0%	0	0	0%	0%	0%	0%			0%		
Kandal	0	0	152	264	74%	5	6	20%	0	0	0%	0	0	0%	0	0	0%	0	0	0%	0	0	0%	0	0	0%	0%	0%	0%			0%		
Lech	0	0	0	29	2900%	0	0	0%	0	0	0%	0	0	0%	0	0	0%	0	0	0%	0	0	0%	0	0	0%	0%	0%	0%			0%		
<b>Phnom Penh</b>	<b>1366</b>	<b>1387</b>	<b>876</b>	<b>1146</b>	<b>31%</b>	<b>561</b>	<b>578</b>	<b>3%</b>	<b>12</b>	<b>11</b>	<b>-8%</b>	<b>0</b>	<b>0</b>	<b>0%</b>	<b>0</b>	<b>0</b>	<b>0%</b>	<b>0</b>	<b>0</b>	<b>0%</b>	<b>0</b>	<b>0</b>	<b>0%</b>	<b>0</b>	<b>0</b>	<b>0%</b>	<b>0%</b>	<b>0%</b>	<b>0%</b>	<b>0%</b>	<b>0%</b>	<b>0.64</b>	<b>0.83</b>	<b>29%</b>
Tbong	0	0	12	34	183%	2	2	0%	0	0	0%	0	0	0%	0	0	0%	0	0	0%	0	0	0%	0	0	0%	0%	0%	0%			0%		
<b>Preah Vihear</b>	<b>174</b>	<b>176</b>	<b>3092</b>	<b>4910</b>	<b>59%</b>	<b>269</b>	<b>402</b>	<b>49%</b>	<b>4</b>	<b>2</b>	<b>-50%</b>	<b>4152</b>	<b>4395</b>	<b>6%</b>	<b>2144</b>	<b>2494</b>	<b>16%</b>	<b>1711</b>	<b>1510</b>	<b>-12%</b>	<b>100</b>	<b>83</b>	<b>-17%</b>	<b>197</b>	<b>308</b>	<b>56%</b>	<b>28%</b>	<b>26%</b>	<b>-6%</b>	<b>39.99</b>	<b>50.53</b>	<b>26%</b>		
MOH Central Office	0	0	712	817	15%	554	570	3%	12	11	-8%	0	0	0%	0	0	0%	0	0	0%	0	0	0%	0	0	0%	0%	0%	0%			0%		
Tbeng Meanchey	170	172	3092	4910	59%	269	402	49%	4	2	-50%	4152	4395	6%	2144	2494	16%	1711	1510	-12%	100	83	-17%	197	308	56%	28%	26%	-6%	40.98	51.79	26%		
Kamchay Mear	0	0	192	150	-22%	0	4	400%	0	0	0%	0	0	0%	0	0	0%	0	0	0%	0	0	0%	0	0	0%	0%	0%	0%			0%		
Kampong Trabek	0	0	14	16	14%	0	1	100%	0	0	0%	0	0	0%	0	0	0%	0	0	0%	0	0	0%	0	0	0%	0%	0%	0%			0%		
Mesang	0	0	12	23	92%	1	1	0%	1	0	-100%	0	0	0%	0	0	0%	0	0	0%	0	0	0%	0	0	0%	0%	0%	0%			0%		
Neak Loeung	0	0	106	51	-52%	4	1	-75%	0	0	0%	0	0	0%	0	0	0%	0	0	0%	0	0	0%	0	0	0%	0%	0%	0%			0%		
<b>Prey Veng</b>	<b>976</b>	<b>992</b>	<b>551</b>	<b>415</b>	<b>-25%</b>	<b>73</b>	<b>35</b>	<b>-52%</b>	<b>1</b>	<b>0</b>	<b>-100%</b>	<b>0</b>	<b>0</b>	<b>0%</b>	<b>0</b>	<b>0</b>	<b>0%</b>	<b>0</b>	<b>0</b>	<b>0%</b>	<b>0</b>	<b>0</b>	<b>0%</b>	<b>0</b>	<b>0</b>	<b>0%</b>	<b>0%</b>	<b>0%</b>	<b>0%</b>	<b>0%</b>	<b>0%</b>	<b>0.56</b>	<b>0.42</b>	<b>-26%</b>
Peareang	0	0	48	56	17%	33	22	-33%	0	0	0%	0	0	0%	0	0	0%	0	0	0%	0	0	0%	0	0	0%	0%	0%	0%			0%		
Preah Sdach	0	0	164	99	-40%	35	0	-100%	0	0	0%	0	0	0%	0	0	0%	0	0	0%	0	0	0%	0	0	0%	0%	0%	0%			0%		
<b>Pursat</b>	<b>409</b>	<b>415</b>	<b>4819</b>	<b>5691</b>	<b>18%</b>	<b>220</b>	<b>220</b>	<b>0%</b>	<b>2</b>	<b>2</b>	<b>0%</b>	<b>2009</b>	<b>2472</b>	<b>23%</b>	<b>798</b>	<b>1021</b>	<b>28%</b>	<b>1191</b>	<b>1382</b>	<b>16%</b>	<b>9</b>	<b>34</b>	<b>278%</b>	<b>11</b>	<b>35</b>	<b>218%</b>	<b>42%</b>	<b>49%</b>	<b>18%</b>	<b>16.65</b>	<b>19.50</b>	<b>17%</b>		
Prey Veng	0	0	15	20	33%	0	6	600%	0	0	0%	0	0	0%	0	0	0%	0	0	0%	0	0	0%	0	0	0%	0%	0%	0%			0%		
<b>Ratanak Kiri</b>	<b>155</b>	<b>157</b>	<b>8062</b>	<b>6943</b>	<b>-14%</b>	<b>1426</b>	<b>447</b>	<b>-69%</b>	<b>38</b>	<b>11</b>	<b>-71%</b>	<b>7642</b>	<b>8027</b>	<b>5%</b>	<b>6191</b>	<b>6035</b>	<b>-3%</b>	<b>1424</b>	<b>1959</b>	<b>38%</b>	<b>12</b>	<b>19</b>	<b>58%</b>	<b>15</b>	<b>14</b>	<b>-7%</b>	<b>41%</b>	<b>43%</b>	<b>5%</b>	<b>101.22</b>	<b>94.98</b>	<b>-6%</b>		

Surveillance Data by District, Jan-Dec 2011

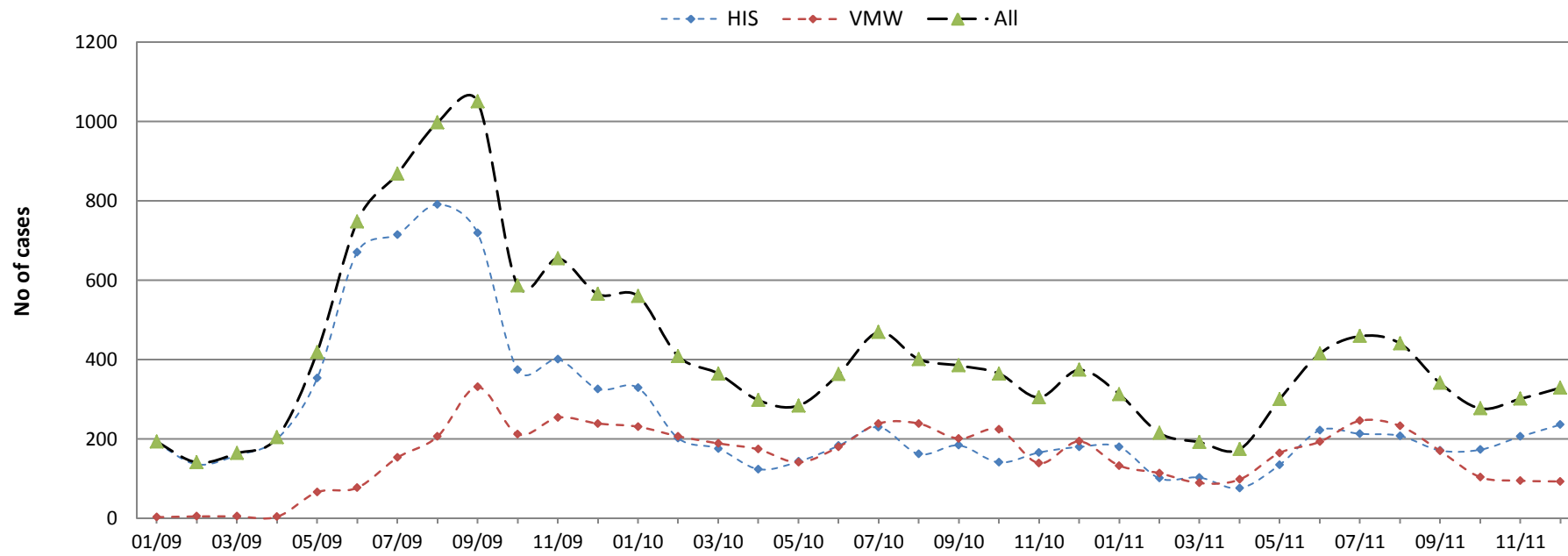
Province / Op. District	Population (x1000)		Health Facility (HIS)									Village Malaria Workers												Incidence (per 1000 pop)									
			All Cases			Severe			Deaths			All Cases			Treated Pf			Treated Pv			Referred Pf			Referred Pv			TPR						
			2010	2011	Change	2010	2011	Change	2010	2011	Change	2010	2011	Change	2010	2011	Change	2010	2011	Change	2010	2011	Change	2010	2011	Change	2010	2011	Change				
n	n	%	n	n	%	n	n	%	n	n	%	n	n	%	n	n	%	n	n	%	n	n	%	n	n	%							
Bakan	129	131		492	832	69%	37	18	-51%	0	0	0%	0	0	0%	0	0	0%	0	0	0%	0	0	0%	0%	0%	0%	3.82	6.37	67%			
Sampov Meas	280	284		4327	4859	12%	183	202	10%	2	2	0%	2009	2472	23%	798	1021	28%	1191	1382	16%	9	34	278%	11	35	218%	42%	49%	18%	22.55	25.53	13%
Ratanakiri	156	158		8062	6943	-14%	1426	447	-69%	38	11	-71%	7642	8027	5%	6191	6035	-3%	1424	1959	38%	12	19	58%	15	14	-7%	41%	43%	5%	100.81	94.60	-6%
Kralanh	83	85		601	467	-22%	16	28	75%	1	1	0%	767	375	-51%	375	200	-47%	6	125	1983%	7	3	-57%	379	47	-88%	17%	9%	-48%	11.78	9.35	-21%
<b>Siem Reap</b>	<b>919</b>	<b>933</b>		<b>5506</b>	<b>5221</b>	<b>-5%</b>	<b>317</b>	<b>179</b>	<b>-44%</b>	<b>14</b>	<b>12</b>	<b>-14%</b>	<b>4227</b>	<b>3797</b>	<b>-10%</b>	<b>2086</b>	<b>1843</b>	<b>-12%</b>	<b>624</b>	<b>1459</b>	<b>134%</b>	<b>102</b>	<b>72</b>	<b>-29%</b>	<b>1415</b>	<b>423</b>	<b>-70%</b>	<b>29%</b>	<b>26%</b>	<b>-8%</b>	<b>8.94</b>	<b>9.14</b>	<b>2%</b>
Siem Reap	370	376		1488	1567	5%	126	149	18%	13	10	-23%	1270	1348	6%	554	585	6%	193	607	215%	37	36	-3%	486	120	-75%	35%	39%	12%	6.03	7.34	22%
<b>Sihanoukville</b>	<b>228</b>	<b>232</b>		<b>380</b>	<b>1046</b>	<b>175%</b>	<b>22</b>	<b>4</b>	<b>-82%</b>	<b>5</b>	<b>1</b>	<b>-80%</b>	<b>159</b>	<b>176</b>	<b>11%</b>	<b>85</b>	<b>84</b>	<b>-1%</b>	<b>72</b>	<b>74</b>	<b>3%</b>	<b>1</b>	<b>9</b>	<b>800%</b>	<b>1</b>	<b>9</b>	<b>800%</b>	<b>49%</b>	<b>56%</b>	<b>14%</b>	<b>2.35</b>	<b>5.20</b>	<b>121%</b>
Sot Nikum	260.60	264.62		1318	1714	30%	113	2	-98%	0	1	100%	1171	1204	3%	747	749	0%	393	452	15%	0	0	0%	31	3	-90%	42%	38%	-10%	9.43	11.02	17%
<b>Stung Treng</b>	<b>114.42</b>	<b>116.18</b>		<b>1669</b>	<b>2459</b>	<b>47%</b>	<b>120</b>	<b>134</b>	<b>12%</b>	<b>6</b>	<b>6</b>	<b>0%</b>	<b>4167</b>	<b>5241</b>	<b>26%</b>	<b>2925</b>	<b>3545</b>	<b>21%</b>	<b>1225</b>	<b>1452</b>	<b>19%</b>	<b>4</b>	<b>218</b>	<b>5350%</b>	<b>13</b>	<b>26</b>	<b>100%</b>	<b>42%</b>	<b>42%</b>	<b>1%</b>	<b>50.86</b>	<b>64.17</b>	<b>26%</b>
Ankor Chhum	201.72	204.83		2099	1473	-30%	62	0	-100%	0	0	0%	1019	870	-15%	410	309	-25%	32	275	759%	58	33	-43%	519	253	-51%	26%	23%	-9%	12.60	10.04	-20%
Sihanouk	226.38	229.87		380	1046	175%	22	4	-82%	5	1	-80%	159	176	11%	85	84	-1%	72	74	3%	1	9	800%	1	9	800%	49%	56%	14%	2.37	5.24	121%
Steung Treng	114.42	116.18		1669	2459	47%	120	134	12%	6	6	0%	4167	5241	26%	2925	3545	21%	1225	1452	19%	4	218	5350%	13	26	100%	42%	42%	1%	50.86	64.17	26%
<b>Svay Rieng</b>	<b>497.77</b>	<b>505.44</b>		<b>174</b>	<b>240</b>	<b>38%</b>	<b>70</b>	<b>38</b>	<b>-46%</b>	<b>2</b>	<b>4</b>	<b>100%</b>	<b>0</b>	<b>0</b>	<b>0%</b>	<b>0</b>	<b>0</b>	<b>0%</b>	<b>0</b>	<b>0</b>	<b>0%</b>	<b>0</b>	<b>0</b>	<b>0%</b>	<b>0</b>	<b>0</b>	<b>0%</b>	<b>0%</b>	<b>0%</b>	<b>0%</b>	<b>0.35</b>	<b>0.47</b>	<b>36%</b>
Chi Phu	0.00	0.00		29	39	34%	4	3	-25%	0	0	0%	0	0	0%	0	0	0%	0	0	0%	0	0	0%	0	0	0%	0%	0%	0%			0%
Romeas Hek	0.00	0.00		84	111	32%	36	19	-47%	0	0	0%	0	0	0%	0	0	0%	0	0	0%	0	0	0%	0	0	0%	0%	0%	0%			0%
Svay Rieng	0.00	0.00		61	90	48%	30	16	-47%	2	4	100%	0	0	0%	0	0	0%	0	0	0%	0	0	0%	0	0	0%	0%	0%	0%			0%
Ang Rokar	119.25	121.08		671	969	44%	46	19	-59%	0	0	0%	0	0	0%	0	0	0%	0	0	0%	0	0	0%	0	0	0%	0%	0%	0%	5.63	8.00	42%
Bati	187.53	190.41		30	46	53%	1	0	-100%	0	0	0%	0	0	0%	0	0	0%	0	0	0%	0	0	0%	0	0	0%	0%	0%	0%	0.16	0.24	51%
<b>Takeo</b>	<b>870.96</b>	<b>884.37</b>		<b>983</b>	<b>1530</b>	<b>56%</b>	<b>79</b>	<b>63</b>	<b>-20%</b>	<b>2</b>	<b>3</b>	<b>50%</b>	<b>0</b>	<b>0</b>	<b>0%</b>	<b>0</b>	<b>0</b>	<b>0%</b>	<b>0</b>	<b>0</b>	<b>0%</b>	<b>0</b>	<b>0</b>	<b>0%</b>	<b>0</b>	<b>0</b>	<b>0%</b>	<b>0%</b>	<b>0%</b>	<b>1.13</b>	<b>1.73</b>	<b>53%</b>	
Daun Keo	190.12	193.05		102	179	75%	23	42	83%	2	3	50%	0	0	0%	0	0	0%	0	0	0%	0	0	0%	0	0	0%	0%	0%	0%	0.54	0.93	73%
<b>Oddar Meanchey</b>	<b>190.12</b>	<b>193.05</b>		<b>3363</b>	<b>3027</b>	<b>-10%</b>	<b>247</b>	<b>128</b>	<b>-48%</b>	<b>2</b>	<b>0</b>	<b>-100%</b>	<b>5078</b>	<b>2903</b>	<b>-43%</b>	<b>997</b>	<b>473</b>	<b>-53%</b>	<b>3805</b>	<b>2310</b>	<b>-39%</b>	<b>80</b>	<b>50</b>	<b>-38%</b>	<b>196</b>	<b>70</b>	<b>-64%</b>	<b>38%</b>	<b>32%</b>	<b>-17%</b>	<b>42.95</b>	<b>30.10</b>	<b>-30%</b>
Kirivong	233.32	236.91		130	262	102%	9	2	-78%	0	0	0%	0	0	0%	0	0	0%	0	0	0%	0	0	0%	0	0	0%	0%	0%	0%	0.56	1.11	98%
<b>Kep</b>	<b>36.86</b>	<b>37.43</b>		<b>145</b>	<b>135</b>	<b>-7%</b>	<b>26</b>	<b>6</b>	<b>-77%</b>	<b>0</b>	<b>0</b>	<b>0%</b>	<b>0</b>	<b>0</b>	<b>0%</b>	<b>0</b>	<b>0</b>	<b>0%</b>	<b>0</b>	<b>0</b>	<b>0%</b>	<b>0</b>	<b>0</b>	<b>0%</b>	<b>0</b>	<b>0</b>	<b>0%</b>	<b>0%</b>	<b>0%</b>	<b>3.93</b>	<b>3.61</b>	<b>-8%</b>	
Prey Kabass	140.74	142.91		50	74	48%	0	0	0%	0	0	0%	0	0	0%	0	0	0%	0	0	0%	0	0	0%	0	0	0%	0%	0%	0%	0.36	0.52	46%
<b>Pailin</b>	<b>72.55</b>	<b>73.67</b>		<b>575</b>	<b>552</b>	<b>-4%</b>	<b>11</b>	<b>14</b>	<b>27%</b>	<b>0</b>	<b>0</b>	<b>0%</b>	<b>560</b>	<b>331</b>	<b>-41%</b>	<b>99</b>	<b>37</b>	<b>-63%</b>	<b>425</b>	<b>242</b>	<b>-43%</b>	<b>29</b>	<b>46</b>	<b>59%</b>	<b>7</b>	<b>6</b>	<b>-14%</b>	<b>29%</b>	<b>20%</b>	<b>-30%</b>	<b>15.15</b>	<b>11.28</b>	<b>-26%</b>
<b>National Total</b>	<b>13786.80</b>	<b>13999.12</b>		<b>58621</b>	<b>62770</b>	<b>7%</b>	<b>6498</b>	<b>4347</b>	<b>-33%</b>	<b>151</b>	<b>94</b>	<b>-38%</b>	<b>47220</b>	<b>48769</b>	<b>3%</b>	<b>26330</b>	<b>26597</b>	<b>1%</b>	<b>#####</b>	<b>19621</b>	<b>12%</b>	<b>628</b>	<b>882</b>	<b>40%</b>	<b>2740</b>	<b>1669</b>	<b>-39%</b>	<b>36%</b>	<b>35%</b>	<b>-1%</b>	<b>7.43</b>	<b>7.79</b>	<b>5%</b>

Generated from CNM Malaria Database on 09/02/2012 11:03:56 including data from Online MOH HIS

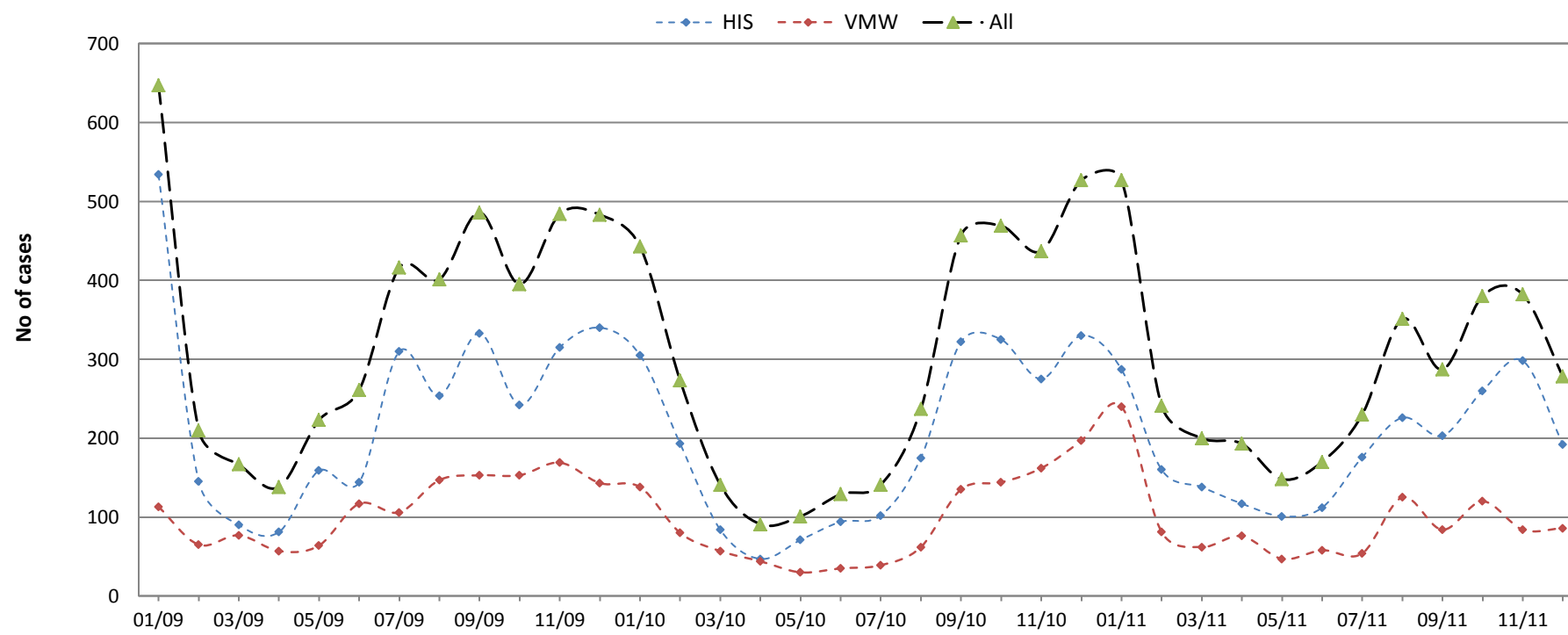
# CAMBODIA MALARIA BULLETIN

## MALARIA TRENDS IN BORDER AREAS\*

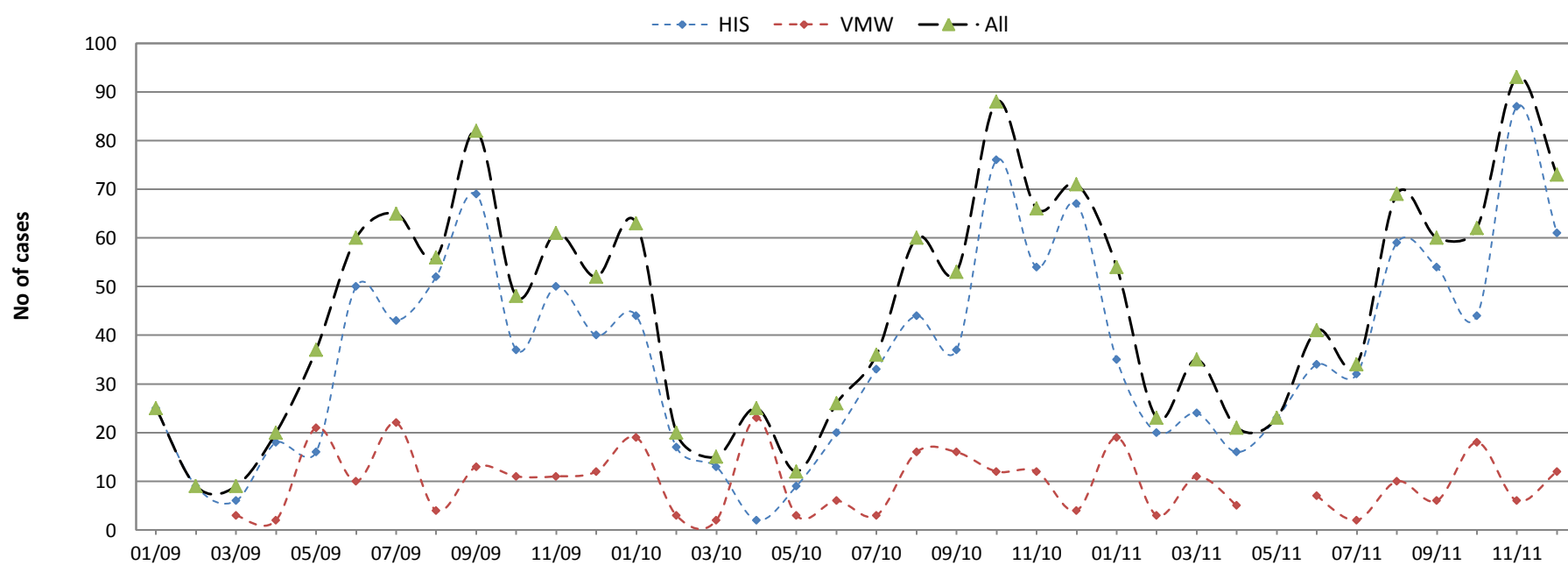
### Thailand



### Vietnam



### Laos



\* HIS data from health facilities serving border villages plus VMW data from border villages (<10km from the border).