

CAMBODIA MALARIA BULLETIN

MARCH 2013 BULLETIN, DATA TO 1ST QUARTER, CNM, CAMBODIA

Estimated coverage with LLIN or retreated mosquito net	Target ¹	Mobile ²
No. of persons at risk of malaria	3,340,275	448,680
No. of LLIN distributed YTD	0	93
No. of LLINH distributed YTD	0	50
No. of conventional nets distributed and retreated YTD	0	0
No. of long lasting nets distributed in last 3 years	2,917,634	143
Estimated coverage with LLIN / treated net (1 net / 1 pers)	87%	0%

¹ Pop of target villages

² Mobile pop (est from census)

Indicators	HIS			VMW			Total		
	2012	2013	Change	2012	2013	Change	2012	2013	Change
Malaria cases	13,706	6,470	-53%	7,851	4,591	-42%	21,557	11,061	-49%
Malaria Incidence ³	0.93	0.43	-54%	6.68	4.05	-39%	1.47	0.73	-50%
Malaria deaths	22	3	-86%	0	0	0%	22	3	-86%
Mortality rate ⁴	0.15	0.02	-87%	0.00	0.00	0%	0.15	0.02	-87%

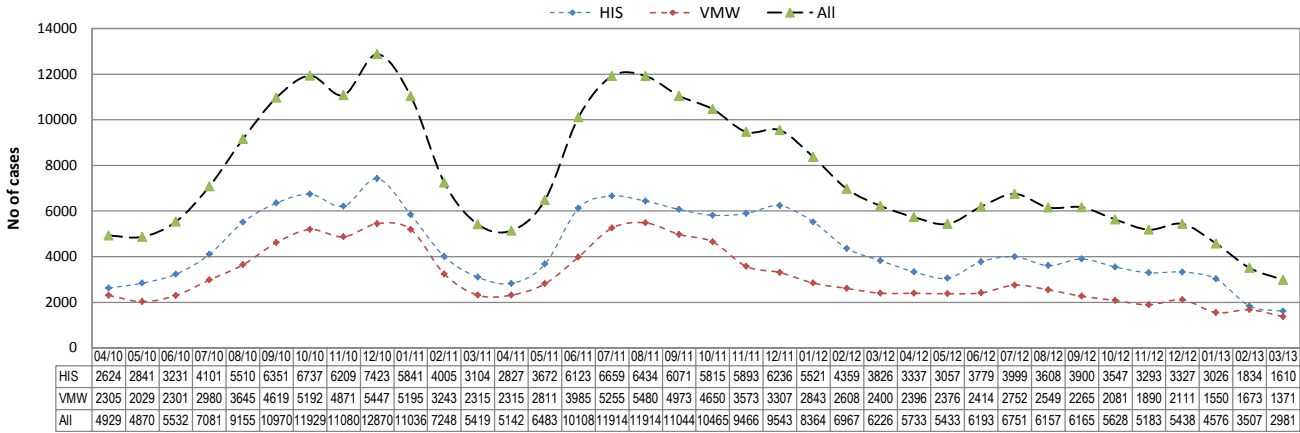
³ Cases per 1000 pop

⁴ Deaths per 100,000 pop

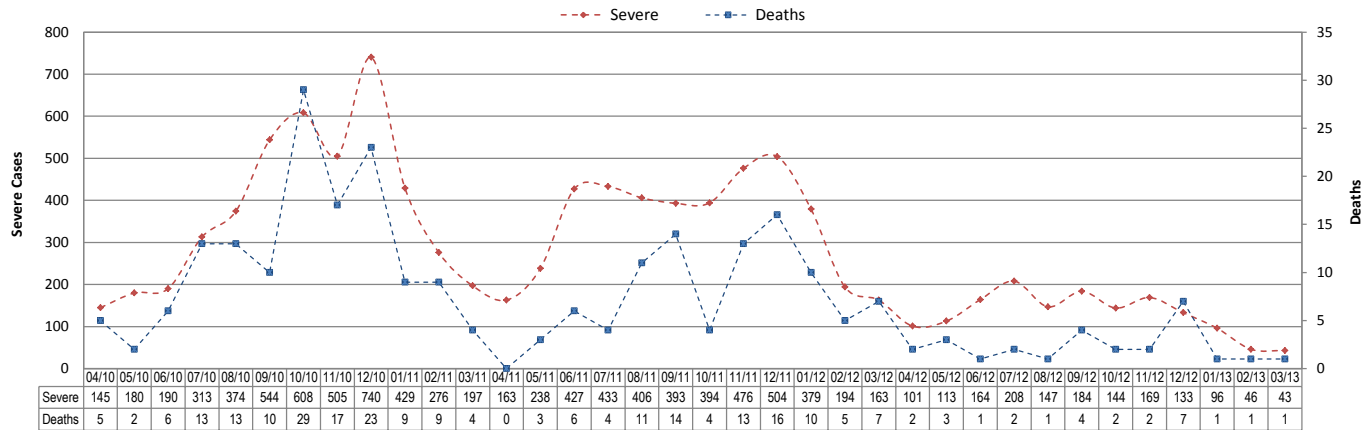
⁵ VMW rates uses VMW village populations

TRENDS IN SURVEILLANCE

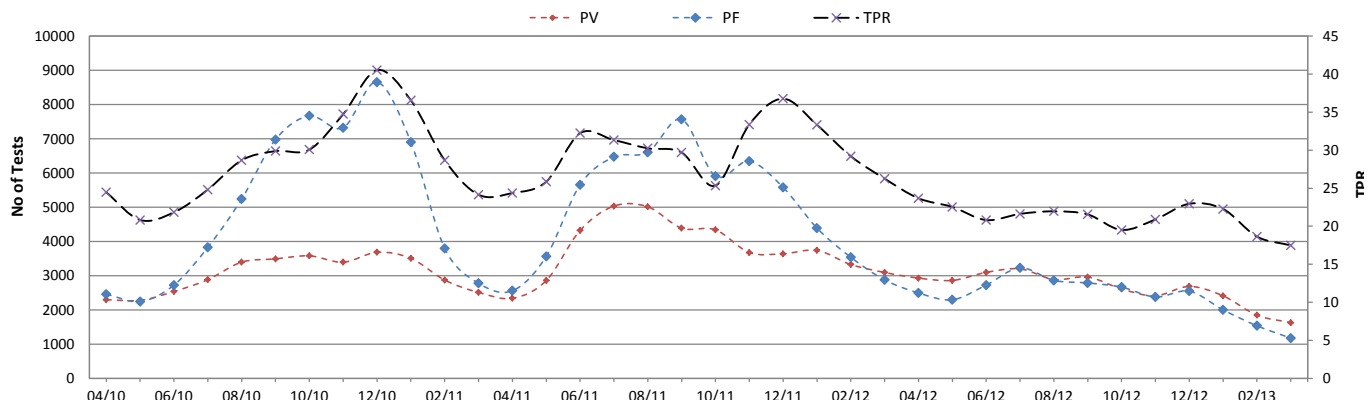
Treated malaria cases from HIS and VMW by month



Severe malaria cases and deaths from HIS by month



Malaria test results (VMW and HIS) by species⁶

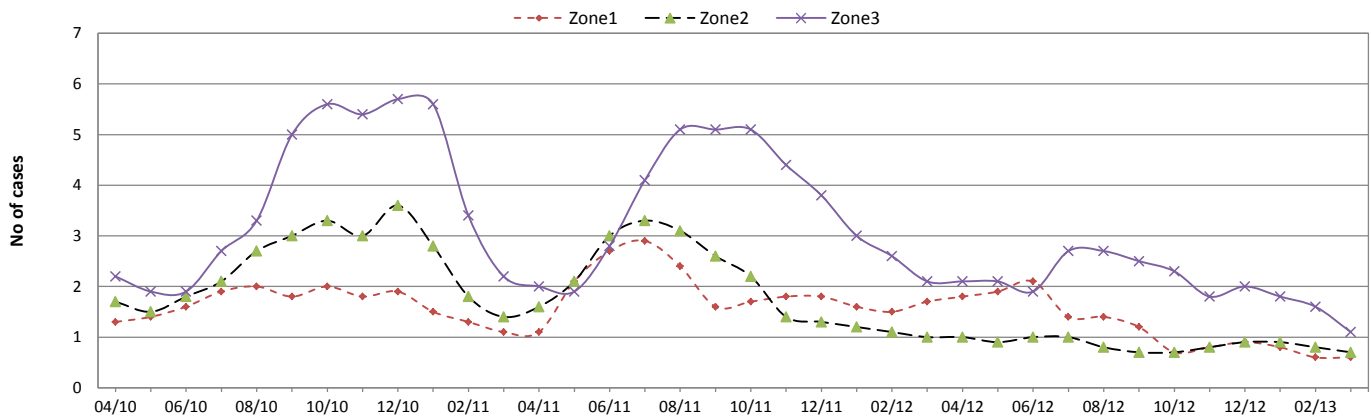


CONTAINMENT INDICATORS

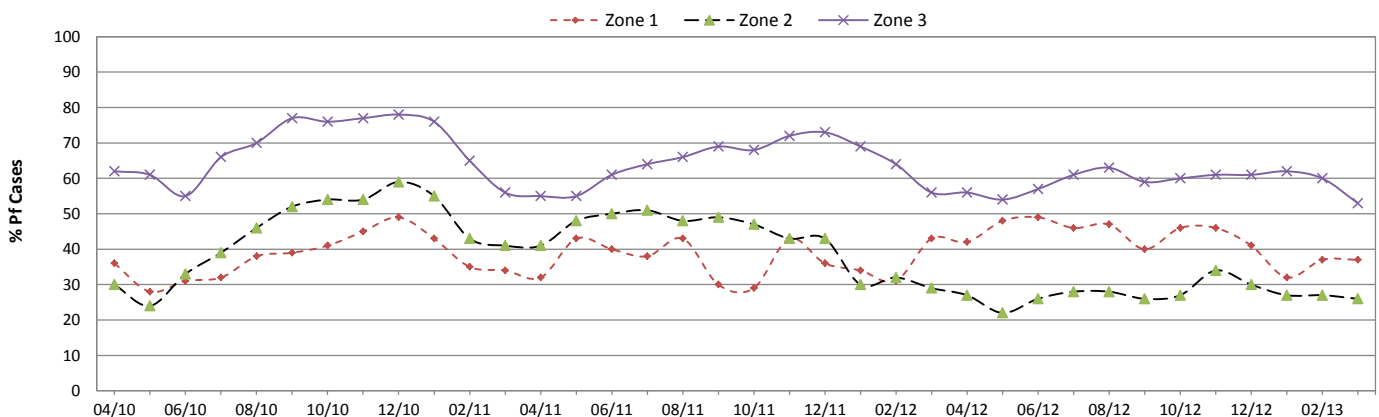
Estimated coverage (possession) with LLIN or retreated mosquito net					VMW RDT tests						
Indicators	Zone 1	Zone 2	Zone 3	Total	Zone	TPR			%Pf		
						2012	2013	Change	2012	2013	Change
No. of persons at risk of malaria (pop of target villages)	381,083	1,354,753	1,589,931	3,340,275	Zone 1	41%	28%	-30%	36%	34%	-5%
No. of LLIN distributed YTD	0	0	0	0		Zone 2	28%	21%	-26%	30%	27%
No. of LLIHN distributed YTD	0	0	0	0	Zone 3		38%	27%	-28%	63%	59%
No. of conventional nets distributed and retreated YTD	0	0	0	0							
No. of long lasting nets distributed in previous 3 years	260,145	1,092,426	1,552,001	2,904,572							
Estimated coverage with LLIN / treated net (1 net / 1 pers)	68%	81%	98%	87%							

National Surveillance data for the period Jan - Mar												
Indicators	HIS treated cases			VMW treated cases			Total treated cases			Incidence (per 1000 pop)		
	2012	2013	Change	2012	2013	Change	2012	2013	Change	2012	2013	Change
Z1 Total malaria cases	926	393	-58%	1,212	736	-39%	2,138	1,129	-47%	5.61	2.96	-47%
Z1 Severe malaria cases	63	12	-81%				63	12	-81%	0.17	0.03	-81%
Z1 Malaria deaths	0	0	#DIV/0!	0	0	0%	0	0	0%	0.00	0.00	0%
Z2 Total malaria cases	3,927	1,710	-56%	2,587	1,634	-37%	6,514	3,344	-49%	4.81	2.47	-49%
Z2 Severe malaria cases	185	46	-75%				185	46	-75%	0.14	0.03	-75%
Z2 Malaria deaths	3	0	-100%	0	0	0%	3	0	-100%	0.00	0.00	-100%
Z3 Total malaria cases	5,485	2,537	-54%	4,046	2,219	-45%	9,531	4,756	-50%	5.99	2.99	-50%
Z3 Severe malaria cases	347	88	-75%				347	88	-75%	0.22	0.06	-75%
Z3 Malaria deaths	14	3	-79%	0	0	0%	14	3	-79%	0.01	0.00	-79%
Z4 Total malaria cases	3,368	1,830	-46%	0	3	300%	3,368	1,833	-46%	n/a	n/a	n/a
Z4 Severe malaria cases	141	39	-72%				141	39	-72%	n/a	n/a	n/a
Z4 Malaria deaths	5	0	-100%	0	0	0%	5	0	-100%	n/a	n/a	n/a

Malaria Cases per VMW by month



Percentage of Pf cases diagnosed by VMW per month



Surveillance Data by District, Jan-Mar 2013

Province / Op. District	Population (x1000)		Health Facility (HIS)									Village Malaria Workers															Incidence (per 1000 pop)					
			All Cases			Severe			Deaths			All Cases			Treated Pf			Treated Pv			Referred Pf			Referred Pv			TPR					
			2012	2013	Change	2012	2013	Change	2012	2013	Change	2012	2013	Change	2012	2013	Change	2012	2013	Change	2012	2013	Change	2012	2013	Change	2012	2013	Change	2012	2013	Change
Mongkol Borei	252	258	57	76	-33%	1	0	-100%	0	0	0%	0	0	0%	0	0	0%	0	0	0%	0	0	0%	0	0	0%	0%	0%	0	0.23	0.29	-30%
Ou Chrov	216	221	49	42	-14%	8	2	-75%	0	0	0%	10	7	-30%	5	0	-100%	5	7	-40%	0	0	0%	0	0	0%	6%	3%	-54%	0.27	0.22	-19%
Preah Net Preah	148	151	10	1	-90%	1	0	-100%	0	0	0%	2	0	-100%	0	0	0%	2	0	-100%	0	0	0%	0	0	0%	1%	0%	-100%	0.08	0.01	-92%
Thma Puok	128	131	15	5	-67%	0	2	200%	0	0	0%	13	17	-31%	2	7	-250%	10	10	0%	0	0	0%	1	0	-100%	6%	10%	-63%	0.21	0.17	-20%
Banteay Meanchey	744	762	131	124	-5%	10	4	-60%	0	0	0%	25	24	-4%	7	7	0%	17	17	0%	0	0	0%	1	0	-100%	5%	6%	20%	0.21	0.19	-7%
Thma Koul	219	224	68	23	-66%	1	0	-100%	0	0	0%	0	0	0%	0	0	0%	0	0	0%	0	0	0%	0	0	0%	0%	0%	0%	0.31	0.10	-67%
Mong Russei	179	183	154	39	-75%	3	0	-100%	1	0	-100%	69	43	-38%	15	5	-67%	54	35	-35%	0	0	0%	0	3	300%	20%	16%	-22%	1.25	0.43	-65%
Sampov Luon	145	148	322	136	-58%	8	1	-88%	0	0	0%	124	45	-64%	26	4	-85%	95	39	-59%	2	1	-50%	1	1	0%	32%	20%	-40%	3.06	1.21	-61%
Battambang	382	391	280	154	-45%	20	3	-85%	0	0	0%	285	318	-12%	108	164	-52%	171	151	-12%	5	2	-60%	1	1	0%	32%	31%	-2%	1.46	1.20	-18%
Sangkae	192	196	39	18	-54%	0	0	0%	0	0	0%	0	0	0%	0	0	0%	0	0	0%	0	0	0%	0	0	0%	0%	0%	0%	0.20	0.09	-55%
Battambang	1126	1153	863	370	-57%	32	4	-88%	1	0	-100%	478	406	-15%	150	173	15%	320	225	-30%	7	3	-57%	2	5	150%	29%	27%	-9%	1.18	0.67	-44%
Chamkar Leu - Stueng Trang	172	176	307	97	-68%	20	3	-85%	0	0	0%	116	64	-45%	49	16	-67%	67	48	-28%	0	0	0%	0	0	0%	50%	35%	-31%	2.46	0.91	-63%
Choeng Prey - Batheay	205	210	59	23	-61%	1	0	-100%	0	0	0%	0	0	0%	0	0	0%	0	0	0%	0	0	0%	0	0	0%	0%	0%	0%	0.29	0.11	-62%
Kampong Cham - Kampong Siem	300	307	219	90	-59%	36	7	-81%	3	1	-67%	0	0	0%	0	0	0%	0	0	0%	0	0	0%	0	0	0%	0%	0%	0%	0.73	0.29	-60%
Kroch Chhmar - Stueng Trang	111	113	112	56	-50%	0	0	0%	0	0	0%	0	0	0%	0	0	0%	0	0	0%	0	0	0%	0	0	0%	0%	0%	0%	1.01	0.49	-51%
Memut	163	167	159	57	-64%	14	1	-93%	0	0	0%	81	28	-65%	22	16	-27%	59	12	-80%	0	0	0%	0	0	0%	25%	11%	-56%	1.47	0.51	-65%
O Reang Ov - Koh Soutin	89	91	172	123	-28%	0	0	0%	0	0	0%	0	0	0%	0	0	0%	0	0	0%	0	0	0%	0	0	0%	0%	0%	0%	1.93	1.35	-30%
Ponhea Krek - Dambae	237	243	440	189	-57%	3	2	-33%	0	0	0%	55	44	-20%	18	20	-11%	37	24	-35%	0	0	0%	0	0	0%	44%	23%	-48%	2.09	0.96	-54%
Prey Chhor - Kang Meas	193	198	113	39	-65%	0	0	0%	0	0	0%	0	0	0%	0	0	0%	0	0	0%	0	0	0%	0	0	0%	0%	0%	0%	0.59	0.20	-66%
Srei Santhor - Kang Meas	149	152	26	26	0%	0	0	0%	0	0	0%	0	0	0%	0	0	0%	0	0	0%	0	0	0%	0	0	0%	0%	0%	0%	0.17	0.17	-2%
Tbong Khmum - Kroch Chhmar	224	229	325	161	-50%	48	11	-77%	3	0	-100%	0	0	0%	0	0	0%	0	0	0%	0	0	0%	0	0	0%	0%	0%	0%	1.45	0.70	-52%
Kampong Cham	1844	1888	1932	861	-55%	122	24	-80%	6	1	-83%	252	136	-46%	89	52	-42%	163	84	-48%	0	0	0%	0	0	0%	37%	21%	-42%	1.18	0.53	-55%
Kampong Chhnang	234	240	120	61	-49%	15	5	-67%	0	0	0%	0	0	0%	0	0	0%	0	0	0%	0	0	0%	0	0	0%	0%	0%	0%	0.51	0.25	-50%
Kampong Tralach	160	163	118	47	-60%	3	4	-33%	0	0	0%	0	0	0%	0	0	0%	0	0	0%	0	0	0%	0	0	0%	0%	0%	0%	0.74	0.29	-61%
Boribo	124	126	78	21	-73%	4	0	-100%	0	0	0%	0	0	0%	0	0	0%	0	0	0%	0	0	0%	0	0	0%	0%	0%	0%	0.63	0.17	-74%
Kampong Chhnang	518	530	316	129	-59%	22	9	-59%	0	0	0%	0	0	0%	0	0	0%	0	0	0%	0	0	0%	0	0	0%	0%	0%	0%	0.61	0.24	-60%
Kampong Speu.	429	440	246	92	-63%	14	3	-79%	0	0	0%	339	148	-56%	101	69	-32%	235	79	-66%	0	0	0%	3	0	-100%	34%	27%	-21%	1.36	0.55	-60%
Kong Pisey	246	252	274	92	-66%	9	2	-78%	0	0	0%	0	0	0%	0	0	0%	0	0	0%	0	0	0%	0	0	0%	0%	0%	0%	1.11	0.37	-67%
Ou Dongk	112	115	156	88	-44%	1	1	0%	0	0	0%	90	0	-100%	26	0	-100%	62	0	-100%	0	0	0%	2	0	-100%	29%	0%	-100%	2.17	0.76	-65%
Kampong Speu	788	807	676	272	-60%	24	6	-75%	0	0	0%	429	148	-66%	127	69	-46%	300	79	-74%	0	0	0%	5	0	-100%	33%	27%	-18%	1.40	0.52	-63%
Baray and Santuk	254	260	246	84	-66%	2	1	-50%	0	0	0%	148	13	-91%	67	4	-94%	61	9	-85%	17	0	-100%	3	0	-100%	40%	8%	-81%	1.47	0.37	-75%
Kampong Thom	294	301	319	117	-63%	24	15	-38%	2	1	-50%	461	310	-33%	175	101	-42%	198	205	-4%	34	2	-94%	54	2	-96%	41%	31%	-26%	2.36	1.41	-40%
Stong	146	150	64	29	-55%	2	4	100%	1	0	-100%	113	69	-39%	41	27	-34%	72	42	-42%	0	0	0%	0	0	0%	22%	16%	-30%	1.21	0.65	-46%
Kampong Thom	694	711	629	230	-63%	28	20	-29%	3	1	-67%	722	392	-46%	283	132	-53%	331	256	-23%	51	2	-96%	57	2	-96%	36%	24%	-33%	1.79	0.87	-51%
Angkor Chey	113	116	26	27	4%	5	1	-80%	0	0	0%	0	0	0%	0	0	0%	0	0	0%	0	0	0%	0	0	0%	0%	0%	0%	0.23	0.23	1%
Chhouk	209	214	259	135	-48%	14	10	-29%	0	0	0%	247	90	-64%	55	17	-69%	192	73	-62%	0	0	0%	0	0	0%	37%	17%	-54%	2.42	1.05	-57%
Kampong Trach	164	168	43	20	-53%	0	0	0%	0	0	0%	0	0	0%	0	0	0%	0	0	0%	0	0	0%	0	0	0%	0%	0%	0%	0.26	0.12	-55%
Kampot	158	161	249	66	-73%	8	1	-88%	0	0	0%	54	41	-24%	13	13	0%	41	28	-32%	0	0	0%	0	0	0%	36%	58%	-61%	1.92	0.66	-66%
Kampot	643	659	577	248	-57%	27	12	-56%	0	0	0%	301	131	-56%	68	30	-56%	233	101	-57%	0	0	0%	0	0	0%	37%	22%	-41%	1.36	0.58	-58%

Surveillance Data by District, Jan-Mar 2013

Province / Op. District	Population (x1000)		Health Facility (HIS)									Village Malaria Workers												Incidence (per 1000 pop)											
			All Cases			Severe			Deaths			All Cases			Treated Pf			Treated Pv			Referred Pf			Referred Pv			TPR								
			2012	2013	Change	2012	2013	Change	2012	2013	Change	2012	2013	Change	2012	2013	Change	2012	2013	Change	2012	2013	Change	2012	2013	Change	2012	2013	Change	2012	2013	Change	2012	2013	Change
Ang Snuol	0	0	0	2	200%	0	0	0%	0	0	0%	0	0	0%	0	0	0%	0	0	0%	0	0	0%	0	0	0%	0	0	0%	0	0	0%	0	0	0%
Kean Svay	0	0	3	22	633%	0	0	0%	0	0	0%	0	0	0%	0	0	0%	0	0	0%	0	0	0%	0	0	0%	0	0	0%	0	0	0%	0	0	0%
Koh Thom	0	0	19	27	42%	0	0	0%	0	0	0%	0	0	0%	0	0	0%	0	0	0%	0	0	0%	0	0	0%	0	0	0%	0	0	0%	0	0	0%
Ksach Kandal	0	0	15	17	13%	0	0	0%	0	0	0%	0	0	0%	0	0	0%	0	0	0%	0	0	0%	0	0	0%	0	0	0%	0	0	0%	0	0	0%
Muk Kam Poul	0	0	38	8	-79%	0	0	0%	0	0	0%	0	0	0%	0	0	0%	0	0	0%	0	0	0%	0	0	0%	0	0	0%	0	0	0%	0	0	0%
Ponhea Leu	0	0	1	31	3000%	0	0	0%	0	0	0%	0	0	0%	0	0	0%	0	0	0%	0	0	0%	0	0	0%	0	0	0%	0	0	0%	0	0	0%
Saang	0	0	5	6	20%	0	0	0%	0	0	0%	0	0	0%	0	0	0%	0	0	0%	0	0	0%	0	0	0%	0	0	0%	0	0	0%	0	0	0%
Takhmau	0	0	20	3	-85%	0	1	100%	0	0	0%	0	0	0%	0	0	0%	0	0	0%	0	0	0%	0	0	0%	0	0	0%	0	0	0%	0	0	0%
Kandal	1390	1424	101	116	-15%	0	1	100%	0	0	0%	0	0	0%	0	0	0%	0	0	0%	0	0	0%	0	0	0%	0	0	0%	0	0	0%	0.07	0.08	12%
Smach Mean Chey	63	65	148	35	-76%	13	3	-77%	0	0	0%	109	62	-43%	33	28	-15%	76	34	-55%	0	0	0%	0	0	0%	24%	18%	-24%	4.06	1.50	-63%			
Srae Ambel	67	68	57	14	-75%	4	0	-100%	0	0	0%	12	3	-75%	2	2	0%	10	1	-90%	0	0	0%	0	0	0%	31%	17%	-46%	1.04	0.25	-76%			
Koh Kong	129	132	205	49	-76%	17	3	-82%	0	0	0%	121	65	-46%	35	30	-14%	86	35	-59%	0	0	0%	0	0	0%	25%	18%	-26%	2.52	0.86	-66%			
Chhlong	100	102	452	203	-55%	83	10	-88%	1	0	-100%	93	65	-30%	46	25	-46%	47	39	-17%	0	1	100%	0	0	0%	44%	31%	-30%	5.46	2.61	-52%			
Kratie	244	250	877	397	-55%	37	15	-59%	2	0	-100%	598	516	-14%	435	369	-15%	162	147	-9%	1	0	-100%	0	0	0%	48%	39%	-18%	6.05	3.66	-40%			
Kratie	350	359	1329	600	-55%	120	25	-79%	3	0	-100%	691	581	-16%	482	394	-18%	209	186	-11%	1	1	0%	0	0	0%	48%	38%	-20%	5.77	3.29	-43%			
Sen Monorom	65	67	454	305	-33%	4	3	-25%	0	1	100%	302	202	-33%	187	134	-28%	115	68	-41%	0	0	0%	0	0	0%	35%	0%	-100%	11.56	7.57	-35%			
Mondul Kiri	67	69	454	305	-33%	4	3	-25%	0	1	100%	302	202	-33%	187	134	-28%	115	68	-41%	0	0	0%	0	0	0%	35%	31%	-12%	11.27	7.38	-35%			
Cheung	0	0	0	0	0%	0	0	0%	0	0	0%	0	0	0%	0	0	0%	0	0	0%	0	0	0%	0	0	0%	0	0	0%	0	0	0%	0	0	0%
Kandal	0	0	36	25	-31%	2	0	-100%	0	0	0%	0	0	0%	0	0	0%	0	0	0%	0	0	0%	0	0	0%	0	0	0%	0	0	0%	0	0	0%
Lech	0	0	0	0	0%	0	0	0%	0	0	0%	0	0	0%	0	0	0%	0	0	0%	0	0	0%	0	0	0%	0	0	0%	0	0	0%	0	0	0%
Tbong	0	0	10	8	-20%	0	0	0%	0	0	0%	0	0	0%	0	0	0%	0	0	0%	0	0	0%	0	0	0%	0	0	0%	0	0	0%	0	0	0%
MOH Central Office	0	0	134	48	-64%	86	18	-79%	3	0	-100%	0	0	0%	0	0	0%	0	0	0%	0	0	0%	0	0	0%	0	0	0%	0	0	0%	0	0	0%
Phnom Penh	1456	1491	180	81	-55%	88	18	-80%	3	0	-100%	0	0	0%	0	0	0%	0	0	0%	0	0	0%	0	0	0%	0	0	0%	0	0	0%	0	0	0%
Tbeng Meanchey	181	185	963	582	-40%	55	17	-69%	0	0	0%	463	423	-9%	211	155	-27%	223	260	17%	12	4	-67%	17	4	-76%	26%	19%	-27%	7.73	5.39	-30%			
Preah Vihear	185	190	963	582	-40%	55	17	-69%	0	0	0%	463	423	-9%	211	155	-27%	223	260	17%	12	4	-67%	17	4	-76%	26%	19%	-27%	7.54	5.26	-30%			
Kamchay Mear	0	0	28	37	32%	0	0	0%	0	0	0%	0	0	0%	0	0	0%	0	0	0%	0	0	0%	0	0	0%	0	0	0%	0	0	0%	0	0	0%
Kampong Trabek	0	0	4	5	25%	0	0	0%	0	0	0%	0	0	0%	0	0	0%	0	0	0%	0	0	0%	0	0	0%	0	0	0%	0	0	0%	0	0	0%
Mesang	0	0	4	2	-50%	0	0	0%	0	0	0%	0	0	0%	0	0	0%	0	0	0%	0	0	0%	0	0	0%	0	0	0%	0	0	0%	0	0	0%
Neak Loeung	0	0	15	13	-13%	0	0	0%	0	0	0%	0	0	0%	0	0	0%	0	0	0%	0	0	0%	0	0	0%	0	0	0%	0	0	0%	0	0	0%
Peareang	0	0	31	11	-65%	0	5	500%	0	0	0%	0	0	0%	0	0	0%	0	0	0%	0	0	0%	0	0	0%	0	0	0%	0	0	0%	0	0	0%
Preah Sdach	0	0	28	10	-64%	0	0	0%	0	0	0%	0	0	0%	0	0	0%	0	0	0%	0	0	0%	0	0	0%	0	0	0%	0	0	0%	0	0	0%
Prey Veng	0	0	10	4	-60%	5	1	-80%	0	0	0%	0	0	0%	0	0	0%	0	0	0%	0	0	0%	0	0	0%	0	0	0%	0	0	0%	0	0	0%
Prey Veng	1041	1066	120	82	-32%	5	6	20%	0	0	0%	0	0	0%	0	0	0%	0	0	0%	0	0	0%	0	0	0%	0	0	0%	0	0	0%	0.12	0.08	-33%
Bakan	137	141	168	45	-73%	6	0	-100%	0	0	0%	0	0	0%	0	0	0%	0	0	0%	0	0	0%	0	0	0%	0	0	0%	1.22	0.32	-74%			
Sampov Meas	299	306	723	186	-74%	29	3	-90%	0	0	0%	659	287	-56%	278	67	-76%	377	218	-42%	1	1	0%	3	1	-67%	55%	32%	-42%	4.61	1.54	-67%			
Pursat	436	446	891	231	-74%	35	3	-91%	0	0	0%	659	287	-56%	278	68	-76%	377	218	-42%	1	1	0%	3	1	-67%	55%	32%	-42%	3.55	1.16	-67%			
Ratanakiri	166	170	1055	603	-43%	35	7	-80%	0	0	0%	1276	389	-70%	892	245	-73%	381	144	-62%	3	0	-100%	0	0	0%	34%	19%	-44%	14.04	5.84	-58%			
Ratanak Kiri	165	169	1055	603	-43%	35	7	-80%	0	0	0%	1276	389	-70%	892	245	-73%	381	144	-62%	3	0	-100%	0	0	0%	34%	19%	-44%	14.09	5.87	-58%			

Surveillance Data by District, Jan-Mar 2013

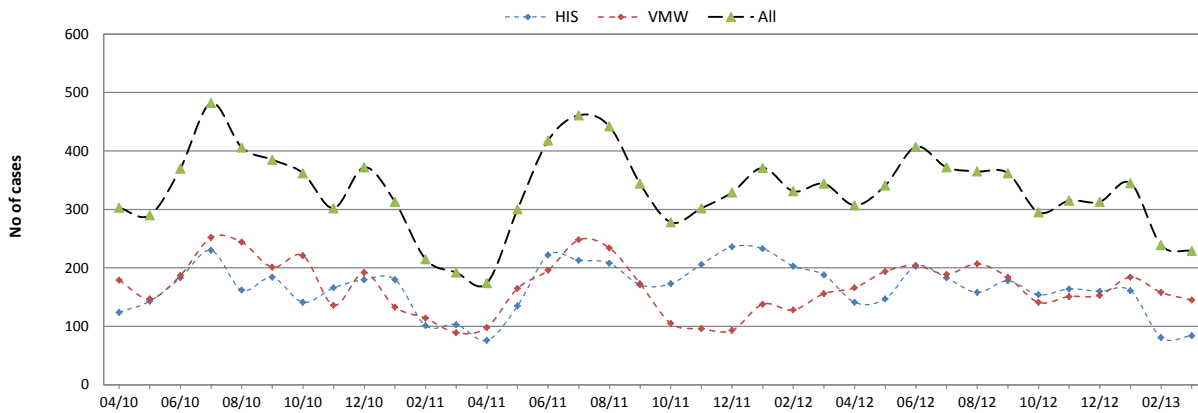
Province / Op. District	Population (x1000)		Health Facility (HIS)									Village Malaria Workers												Incidence (per 1000 pop)										
			All Cases			Severe			Deaths			All Cases			Treated Pf			Treated Pv			Referred Pf			Referred Pv			TPR			2012	2013	Change		
			2012	2013	Change	2012	2013	Change	2012	2013	Change	2012	2013	Change	2012	2013	Change	2012	2013	Change	2012	2013	Change	2012	2013	Change								
Kralanh	89	91	63	40	-37%	7	3	-57%	0	0	0%	45	57	-27%	26	32	-23%	19	25	-32%	0	0	0%	0	0	0%	5%	7%	-51%	1.21	1.07	-12%		
Siem Reap	395	404	407	182	-55%	20	2	-90%	2	0	-100%	320	50	-84%	110	8	-93%	191	42	-78%	6	0	-100%	13	0	-100%	46%	12%	-73%	1.79	0.57	-68%		
Sot Nikum	278	285	479	244	-49%	1	0	-100%	0	0	0%	193	113	-41%	81	26	-68%	112	86	-23%	0	0	0%	0	1	100%	32%	21%	-33%	2.42	1.25	-48%		
Ankor Chhum	215	220	334	99	-70%	0	0	0%	0	0	0%	173	36	-79%	60	6	-90%	112	30	-73%	0	0	0%	1	0	-100%	24%	6%	-73%	2.35	0.61	-74%		
Siem Reap	980	1003	1283	565	-56%	28	5	-82%	2	0	-100%	731	253	-65%	277	71	-74%	434	182	-58%	6	0	-100%	14	1	-93%	25%	11%	-55%	2.04	0.82	-60%		
Sihanouk	241	247	109	60	-45%	0	0	0%	0	0	0%	29	6	-79%	7	3	-57%	21	3	-86%	0	0	0%	1	0	-100%	52%	35%	-32%	0.57	0.27	-53%		
Sihanoukville	243	249	109	60	-45%	0	0	0%	0	0	0%	29	6	-79%	7	3	-57%	21	3	-86%	0	0	0%	1	0	-100%	52%	35%	-32%	0.56	0.26	-53%		
Steung Treng	122.02	124.95	642	331	-48%	29	8	-72%	2	0	-100%	920	524	-43%	651	348	-47%	260	176	-32%	8	0	-100%	1	0	-100%	41%	32%	-22%	12.73	6.84	-46%		
Stung Treng	122.02	124.95	642	331	-48%	29	8	-72%	2	0	-100%	920	524	-43%	651	348	-47%	260	176	-32%	8	0	-100%	1	0	-100%	41%	32%	-22%	12.73	6.84	-46%		
Chi Phu	0.00	0.00	6	3	-50%	0	0	0%	0	0	0%	0	0	0%	0	0	0%	0	0	0%	0	0	0%	0	0	0%	0%	0%	0%	0%	0%	0%		
Romeas Hek	0.00	0.00	30	6	-80%	2	1	-50%	0	0	0%	0	0	0%	0	0	0%	0	0	0%	0	0	0%	0	0	0%	0%	0%	0%	0%	0%	0%		
Svay Rieng	0.00	0.00	41	9	-78%	6	1	-83%	1	0	-100%	0	0	0%	0	0	0%	0	0	0%	0	0	0%	0	0	0%	0%	0%	0%	0%	0%	0%		
Svay Rieng	530.83	543.57	77	18	-77%	8	2	-75%	1	0	-100%	0	0	0%	0	0	0%	0	0	0%	0	0	0%	0	0	0%	0%	0%	0%	0%	0%	0.15	0.03	-77%
Ang Rokar	127.17	130.22	195	80	-59%	7	0	-100%	0	0	0%	4	0	-100%	0	0	0%	4	0	-100%	0	0	0%	0	0	0%	0%	0%	0%	1.56	0.61	-61%		
Bati	199.98	204.78	20	21	5%	0	0	0%	0	0	0%	0	0	0%	0	0	0%	0	0	0%	0	0	0%	0	0	0%	0%	0%	0%	0.10	0.10	3%		
Daun Keo	202.75	207.61	30	13	-57%	4	0	-100%	1	0	-100%	0	0	0%	0	0	0%	0	0	0%	0	0	0%	0	0	0%	0%	0%	0%	0.15	0.06	-58%		
Kirivong	248.82	254.79	60	48	-20%	2	0	-100%	0	0	0%	0	0	0%	0	0	0%	0	0	0%	0	0	0%	0	0	0%	0%	0%	0%	0.24	0.19	-22%		
Prey Kabass	150.09	153.69	5	2	-60%	0	0	0%	0	0	0%	0	0	0%	0	0	0%	0	0	0%	0	0	0%	0	0	0%	0%	0%	0%	0.03	0.01	-61%		
Takeo	928.80	951.09	310	164	-47%	13	0	-100%	1	0	-100%	4	0	-100%	0	0	0%	4	0	-100%	0	0	0%	0	0	0%	15%	0%	-100%	0.34	0.17	-49%		
Samraong	202.75	207.61	719	385	-46%	30	7	-77%	0	0	0%	551	576	5%	48	63	31%	490	499	2%	2	3	50%	11	11	0%	37%	37%	0%	6.20	4.56	-26%		
Oddar Meanchey	202.75	207.61	719	385	-46%	30	7	-77%	0	0	0%	551	576	5%	48	63	31%	491	499	2%	2	3	50%	11	11	0%	37%	37%	0%	6.20	4.56	-26%		
Kep	39.31	40.25	14	8	-43%	0	0	0%	0	0	0%	0	0	0%	0	0	0%	0	0	0%	0	0	0%	0	0	0%	0%	0%	0%	0.36	0.20	-44%		
Kep	39.31	40.25	14	8	-43%	0	0	0%	0	0	0%	0	0	0%	0	0	0%	0	0	0%	0	0	0%	0	0	0%	0%	0%	0%	0%	0.36	0.20	-44%	
Pailin	77.38	79.23	130	56	-57%	4	1	-75%	0	0	0%	100	89	-11%	13	22	69%	81	62	-23%	5	1	-80%	1	4	300%	30%	31%	1%	2.89	1.77	-39%		
Pailin	77.37	79.23	130	56	-57%	4	1	-75%	0	0	0%	100	89	-11%	13	22	69%	81	62	-23%	5	1	-80%	1	4	300%	30%	31%	1%	2.90	1.77	-39%		
National Total	14702.42	15055.15	13706	6470	-53%	736	185	-75%	22	3	-86%	8054	4632	-42%	3805	1996	-48%	4046	2595	-36%	96	15	-84%	113	28	-75%	34%	25%	-28%	1.47	0.73	-50%		

Malaria Bulletin Ver 2 - Generated from CNM Malaria Database on 23/07/2013 17:15:10 including data from Online MOH HIS

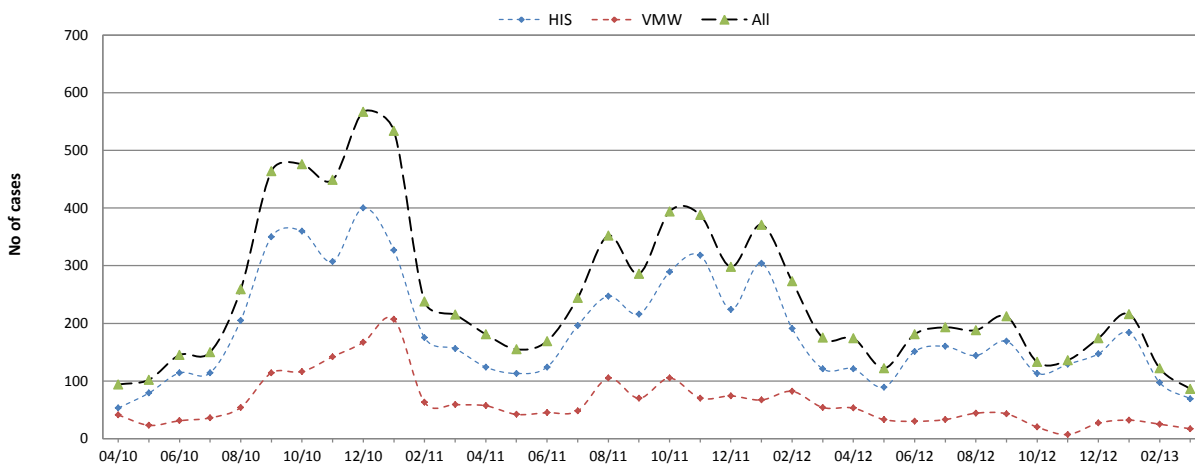
CAMBODIA MALARIA BULLETIN

MALARIA TRENDS IN BORDER AREAS*

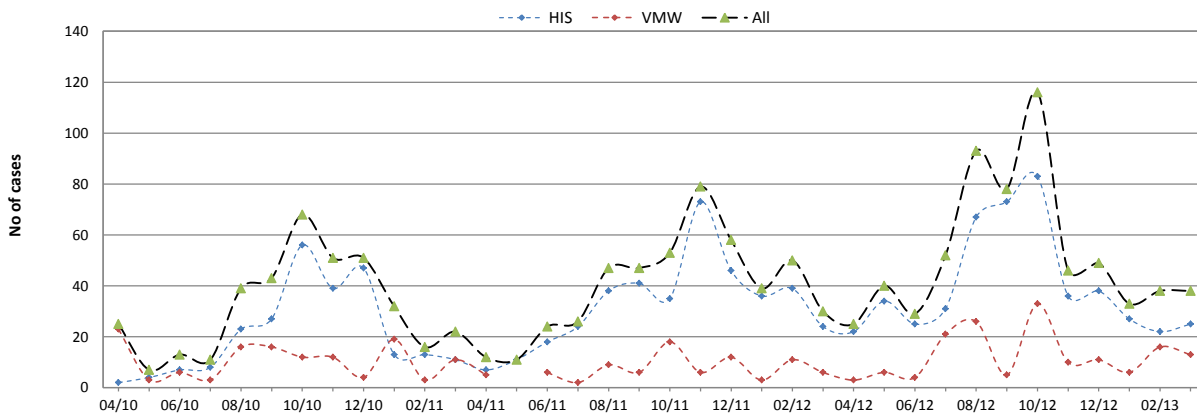
Thailand



Vietnam



Laos



* HIS data from health facilities serving border villages plus VMW data from border villages (<10km from the border).